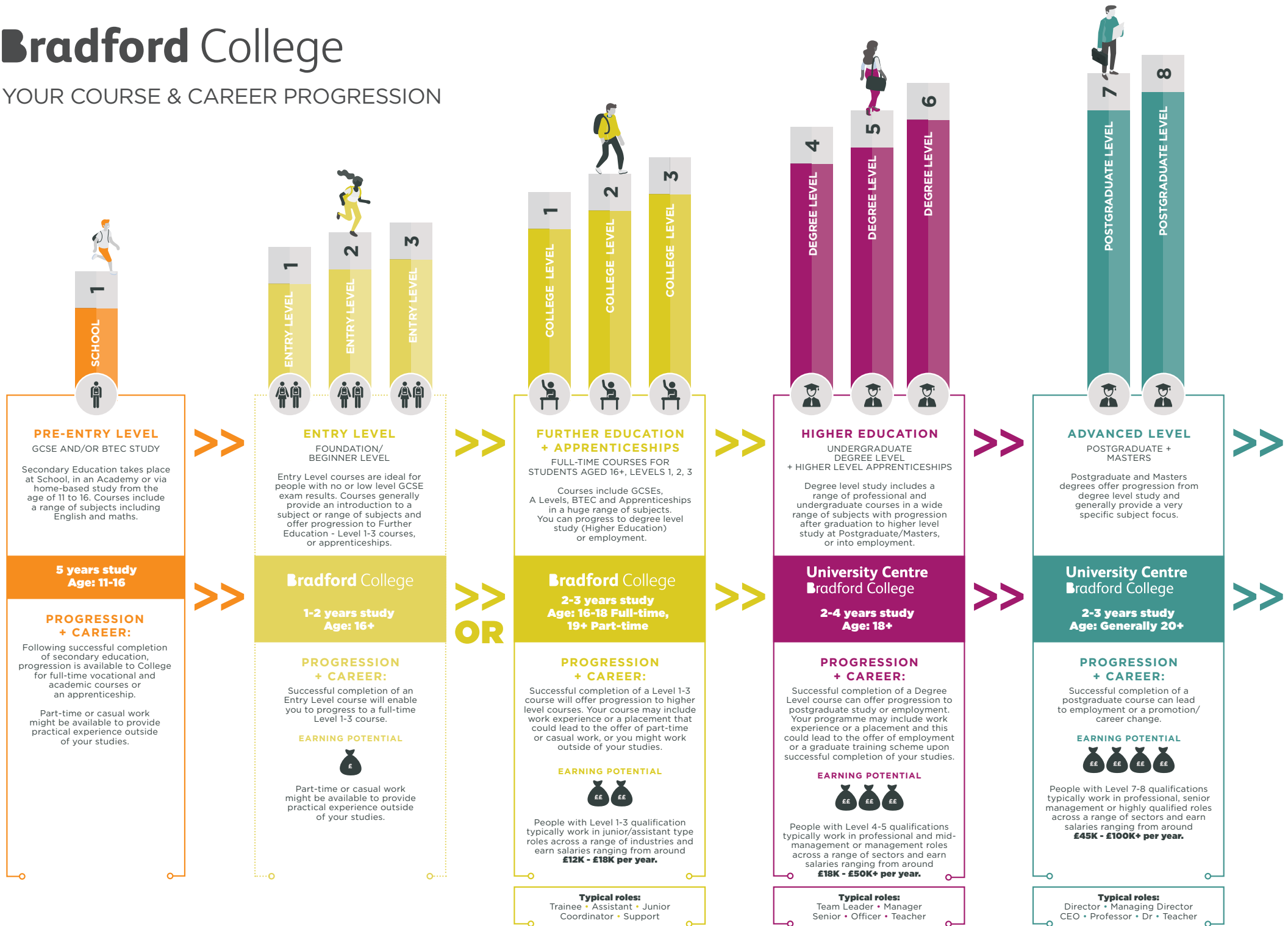


Bradford College

YOUR COURSE & CAREER PROGRESSION



PRE-ENTRY LEVEL

GCSE AND/OR BTEC STUDY

Secondary Education takes place at School, in an Academy or via home-based study from the age of 11 to 16. Courses include a range of subjects including English and maths.

5 years study
Age: 11-16

PROGRESSION + CAREER:

Following successful completion of secondary education, progression is available to College for full-time vocational and academic courses or an apprenticeship.

Part-time or casual work might be available to provide practical experience outside of your studies.

ENTRY LEVEL

FOUNDATION/
BEGINNER LEVEL

Entry Level courses are ideal for people with no or low level GCSE exam results. Courses generally provide an introduction to a subject or range of subjects and offer progression to Further Education - Level 1-3 courses, or apprenticeships.

Bradford College

1-2 years study
Age: 16+

PROGRESSION + CAREER:

Successful completion of an Entry Level course will enable you to progress to a full-time Level 1-3 course.

EARNING POTENTIAL

Part-time or casual work might be available to provide practical experience outside of your studies.

FURTHER EDUCATION + APPRENTICESHIPS

FULL-TIME COURSES FOR STUDENTS AGED 16+, LEVELS 1, 2, 3

Courses include GCSEs, A Levels, BTEC and Apprenticeships in a huge range of subjects. You can progress to degree level study (Higher Education) or employment.

Bradford College

2-3 years study
Age: 16-18 Full-time, 19+ Part-time

PROGRESSION + CAREER:

Successful completion of a Level 1-3 course will offer progression to higher level courses. Your course may include work experience or a placement that could lead to the offer of part-time or casual work, or you might work outside of your studies.

EARNING POTENTIAL

People with Level 1-3 qualification typically work in junior/assistant type roles across a range of industries and earn salaries ranging from around **£12K - £18K per year.**

Typical roles:

Trainee • Assistant • Junior Coordinator • Support

HIGHER EDUCATION

UNDERGRADUATE
DEGREE LEVEL
+ HIGHER LEVEL APPRENTICESHIPS

Degree level study includes a range of professional and undergraduate courses in a wide range of subjects with progression after graduation to higher level study at Postgraduate/Masters, or into employment.

**University Centre
Bradford College**

2-4 years study
Age: 18+

PROGRESSION + CAREER:

Successful completion of a Degree Level course can offer progression to postgraduate study or employment. Your programme may include work experience or a placement and this could lead to the offer of employment or a graduate training scheme upon successful completion of your studies.

EARNING POTENTIAL

People with Level 4-5 qualifications typically work in professional and mid-management or management roles across a range of sectors and earn salaries ranging from around **£18K - £50K+ per year.**

Typical roles:

Team Leader • Manager Senior • Officer • Teacher

ADVANCED LEVEL

POSTGRADUATE +
MASTERS

Postgraduate and Masters degrees offer progression from degree level study and generally provide a very specific subject focus.

**University Centre
Bradford College**

2-3 years study
Age: Generally 20+

PROGRESSION + CAREER:

Successful completion of a postgraduate course can lead to employment or a promotion/career change.

EARNING POTENTIAL

People with Level 7-8 qualifications typically work in professional, senior management or highly qualified roles across a range of sectors and earn salaries ranging from around **£45K - £100K+ per year.**

Typical roles:

Director • Managing Director • CEO • Professor • Dr • Teacher