



**Rethink  
Reshape  
Rework  
Rebuild**

**Bradford College**

# INVEST IN BRADFORD COLLEGE

**Bradford College has secured an unprecedented £40 million in funding over the last three years. This substantial investment has enabled us to restore, renew, and renovate aspirational facilities in the heart of Bradford.**

Now, we're ready to build on this momentum. As one of the region's largest further education providers, we are well positioned to become a flagship Technical Excellence College in Construction.

By investing in Bradford College, previously secured funding can be amplified to further modernise our estate, regenerating the local area and widening curriculum to meet urgent Government priorities.

With a rich legacy of skills-based learning, a deep-rooted commitment to the local community, and a location ripe for redevelopment in the city's Knowledge Quarter, we are uniquely aligned with the City of Bradford Development Framework (2024).



Bradford College's Garden Mills was transformed in 2024 after a £6.9m refurbishment project to create a cutting-edge STEM building for higher-level/degree students.



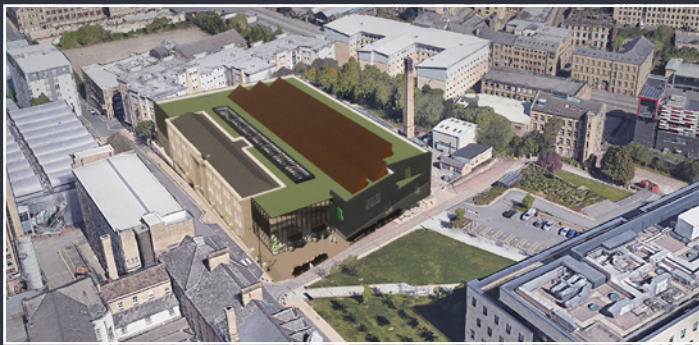
The purpose-built £19m Bradford College Junction Mills will complete in 2026, teaching modern automotive and digital engineering curricula.

# The Technical Excellence College in Construction

## LOCATION: KNOWLEDGE QUARTER, BRADFORD

Bradford College has long been a cornerstone of educational opportunity and economic regeneration in West Yorkshire, but today we are at a pivotal point in our journey. Just like the city, we are ready to scale our impact further with the right capital investment significantly scale up our impact – creating ‘The Technical Excellence College in Construction.’

The proposal is to transform the College’s Lister Building into a knowledge-intensive construction centre that promotes lifelong learning and attracts talent and enterprising businesses to the city. The project will generate the skills desperately needed to deliver the Government’s levelling-up agenda, the transition to net zero, and infrastructure-led economic recovery.



Aerial view of the proposed building.

The Construction Centre of Excellence project will be a catalyst for regeneration, establishing Bradford College as a foundational partner in the city’s renewal. Located in the city’s Knowledge Quarter, this priority area is already noted in the City of Bradford Development Framework as a critical hub for education-led regeneration, lifelong learning and digital innovation, cultural and creative industry growth, and student and community-focused housing.

The Knowledge Quarter is designated as an area expected to have the largest potential impact and benefits on Bradford. With targeted investment, Bradford College will enhance its capacity to deliver vocational training and professional development that feeds directly into the local economy.



The Technical Excellence College in Construction.

## Tackling a Construction Skills Deficit

**The Knowledge Quarter is designated as an area expected to have the largest potential impact and benefits on Bradford. With targeted investment, Bradford College will enhance its capacity to deliver vocational training and professional development that feeds directly into the local economy.**

In the next three years, a 7.7 % growth in construction jobs in the district will vastly outpace national demand (4 %). Despite this, the Local Skills Improvement Plan demonstrates that West Yorkshire already faces a significant skills shortage in this sector. Investment is key to reversing this and supporting regional regeneration, job creation, and the industry’s long-term sustainability.

Establishing Bradford College as a Technical Excellence College will support and promote high-quality training pathways through to Level 3 to prepare residents for desirable job opportunities in construction, and as a gateway to higher education. This will directly benefit local people and businesses, equipping them with the high-level skills needed for major infrastructure projects ahead.

# Why Choose Bradford College?



## EXPERIENCED PROVIDER

Bradford College has over 185 years of experience delivering education (including construction and engineering training), enterprise, and employment. We are ready to act at pace to provide scalable, high-impact training that meets both current and future workforce needs.



## SUCCESSFUL TRACK RECORD

Bradford College is the number one provider in West Yorkshire for 16-18 study programmes and 5th nationally for apprenticeships. Last year, students achieved an incredible 90.4 % achievement rate, 8.9 % above the national rate.



## LEVELLING-UP AGENDA

Bradford is in one of the UK's most deprived urban areas, with 64.1 % of the population in bands 1-3 of the most deprived (IMD) in Bradford's communities and 43.2 % economically inactive. Investment will contribute to the levelling-up agenda and social mobility.



## YOUNG POPULATION

Bradford is one of the youngest UK populations, with 40 % under 30. The district's population is growing (1.5 % in the last 5 years and 0.4 % growth predicted over the next 5 years). We would engage underrepresented groups to widen participation and fill critical workforce gaps.



## EMERGING TECHNOLOGIES

Alongside traditional and heritage skills, investment is key to offering new and emerging technologies curriculum, incorporate modern methods of construction (MMC), retrofit, and low-carbon building technologies, whilst supporting green skills to future-proof the UK workforce.



## A Meaningful Investment

Alongside traditional and heritage skills, investment is key to offering new and emerging technologies curriculum, incorporate modern methods of construction (MMC), retrofit, and low-carbon building technologies, whilst supporting green skills to future-proof the UK workforce.

More than 2,000+ Bradfordians gain construction skills every year, but this is only a fraction of what is needed to fill critical skills gaps. Capital investment in Bradford College will unlock a multiplier effect across the region, boost productivity through a job-ready workforce, and make Bradford a future-ready city.

## Contact

Pamela Sheldon, Head of Department – Projects

e: [p.sheldon@bradfordcollege.ac.uk](mailto:p.sheldon@bradfordcollege.ac.uk)

t: 01274 088 088





**Bradford** College