




**Bradford** College

**Stand Out**

degrees @ Bradford College

HIGHER TECHNICAL & PROFESSIONAL COURSES 2023

**#AMBITION  
BRADFORD**

The Bradford College logo, which consists of a white silhouette of the county of Bradford with the words "Bradford College" written vertically in a black serif font inside it, mounted on the building's facade.

If you require any part of this course guide in a larger or an alternative format, please contact us on 01274 088088. All information correct at time of going to print.

Our prospectus, college documents and website are simply here to offer a guide. We accept no liability for any inaccurate statements and are not responsible for any negative outcomes if you rely on an inaccurate statement. Information in this guide was correct at time of print but may be subject to change.

“Education is the most powerful weapon which you can use to change the world.”

Nelson Mandela



Thank you for taking the time to consider Bradford College for your next step into higher education.

Nelson Mandela once said, “Education is the most powerful weapon which you can use to change the world.” This has never been more relevant for the people of our city and wider county. Education in its many forms has a transformative power like no other.

It is our commitment to Bradford and our community to provide relevant, meaningful higher technical skills and qualifications such as degrees, Higher Apprenticeships and postgraduate study to change our world for good.

Good luck with your next step, we hope you succeed wherever your journey takes you.

---

**Chris Webb – Principal & CEO, Bradford College**

---

**Contents**

<b>HOW TO BUILD A BRIGHTER FUTURE</b>	<b>P14</b>
APPLIED SCIENCES	P16
PROFESSIONAL	P20
COMPUTING & DIGITAL	P24
CREATIVE INDUSTRIES	P30
MUSIC & PERFORMANCE	P36
ENGINEERING & CONSTRUCTION	P42
HEALTH SCIENCES	P48
HOSPITALITY & TOURISM	P54
SOCIAL SCIENCES & COMMUNITY	P58
TEACHING & EDUCATION	P64
SPORT & PUBLIC SERVICES	P72
ACCESS TO HIGHER EDUCATION	P76
<b>COLLEGE INFORMATION</b>	<b>P82</b>





## **Degrees Step by Step**

@ Bradford College

Choose a course that works for you!  
Start with a one-year HNC, a two-year HND or Foundation Degree, or a three-year Bachelors degree programme... Work through the levels until you reach the qualification you need for the career you want.



**#AMBITION  
BRADFORD**

## **A Degree Your Way** @ Bradford College

Learn by doing. Every programme is practical, with lots of projects and tasks to complete that will enable you to apply the theory you've learnt to your career.



**#AMBITION  
BRADFORD**





## **Study At Your Pace**

@ Bradford College

We offer great support. Class sizes are smaller than many universities offering you more interaction with lecturers and additional time to ask questions.



# Create Your Best Future

@ Bradford College

Get help with finances. Student funding can seem complicated so talk to us; our fees are often lower than universities and living locally helps to lower costs.





# **Build On Your Talent**

@ Bradford College

Benefit from industry experts.  
Our highly qualified lecturers  
will share their academic and  
industry knowledge to help you  
transition from study to work.

**#AMBITION  
BRADFORD**

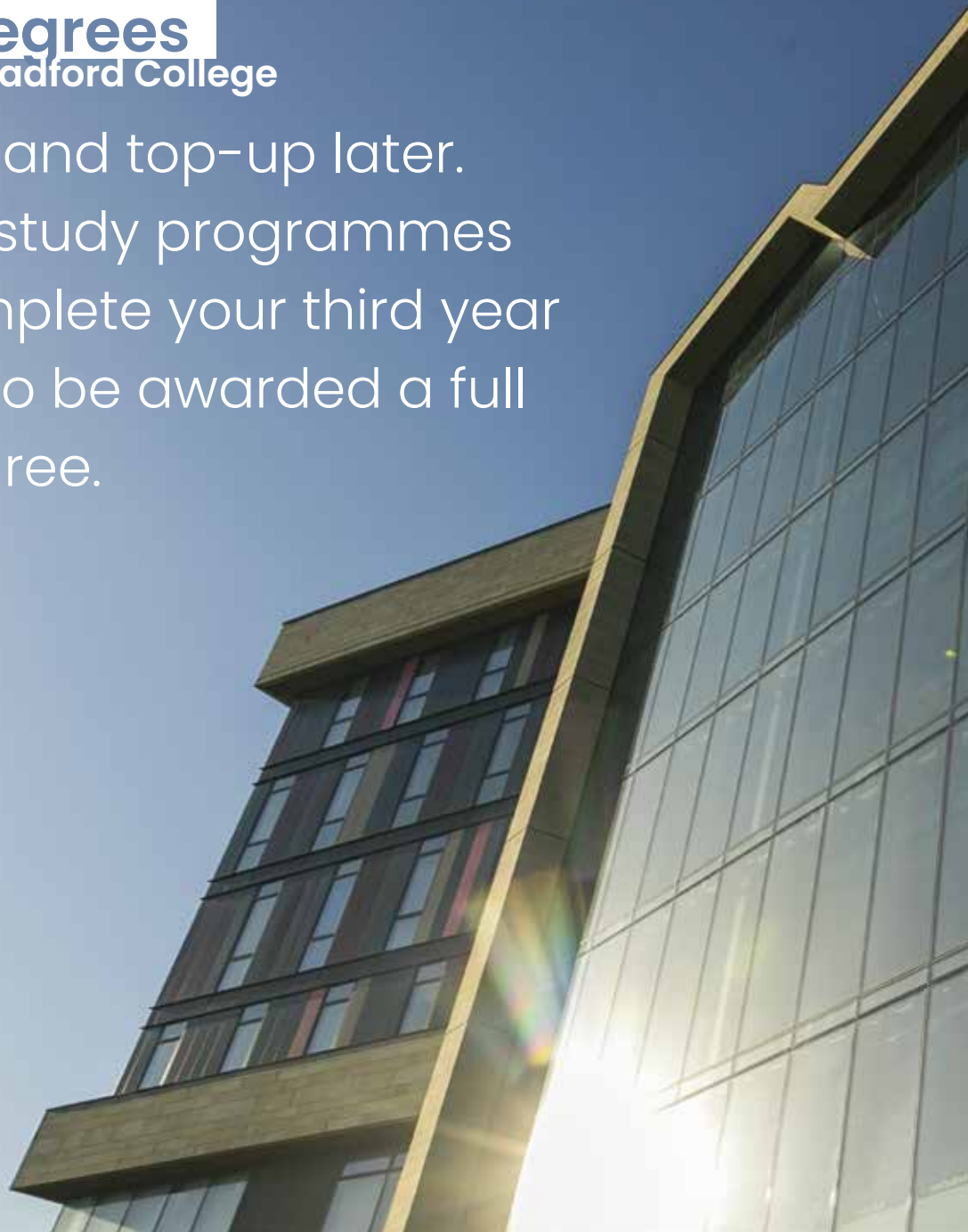




# Better By Degrees

@ Bradford College

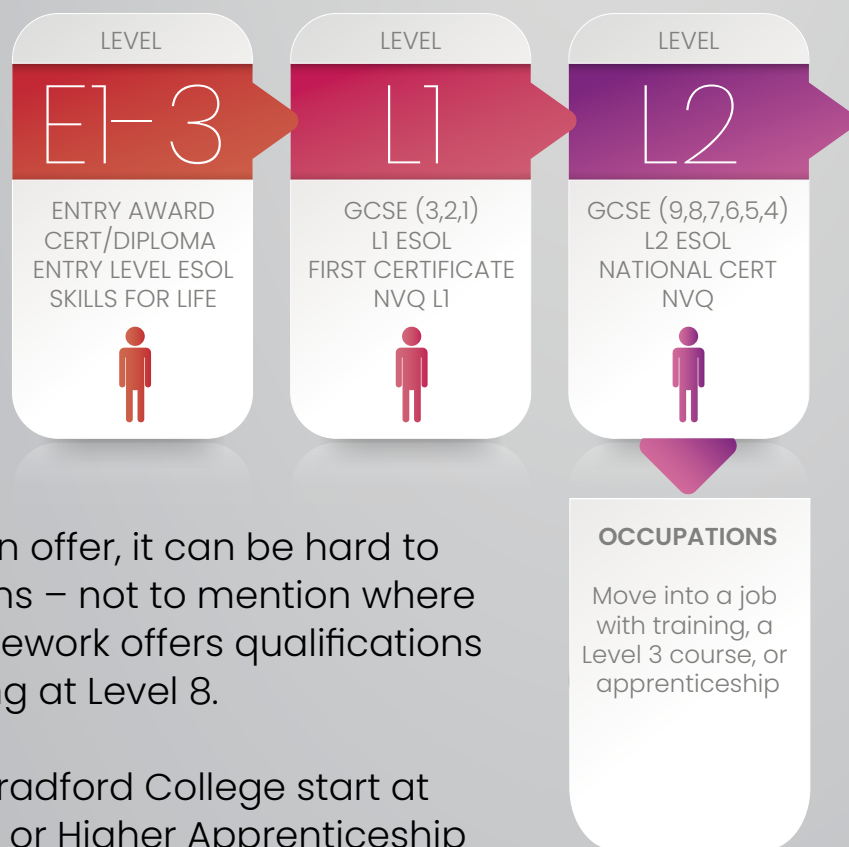
Start with us and top-up later.  
With flexible study programmes  
you can complete your third year  
at any time to be awarded a full  
Honours degree.





#AMBITION  
BRADFORD

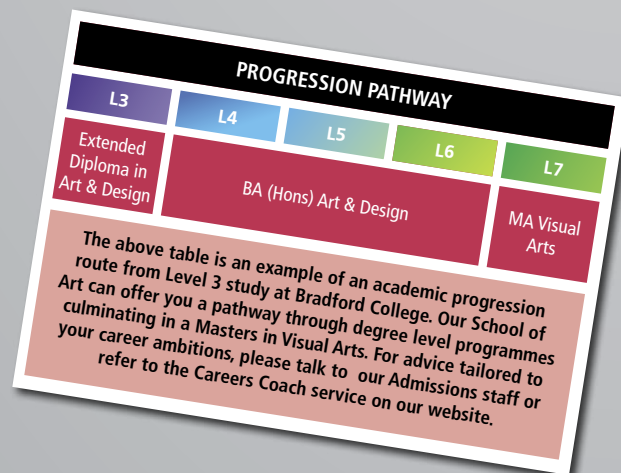
# HOW TO BUILD A BRIGHTER FUTURE



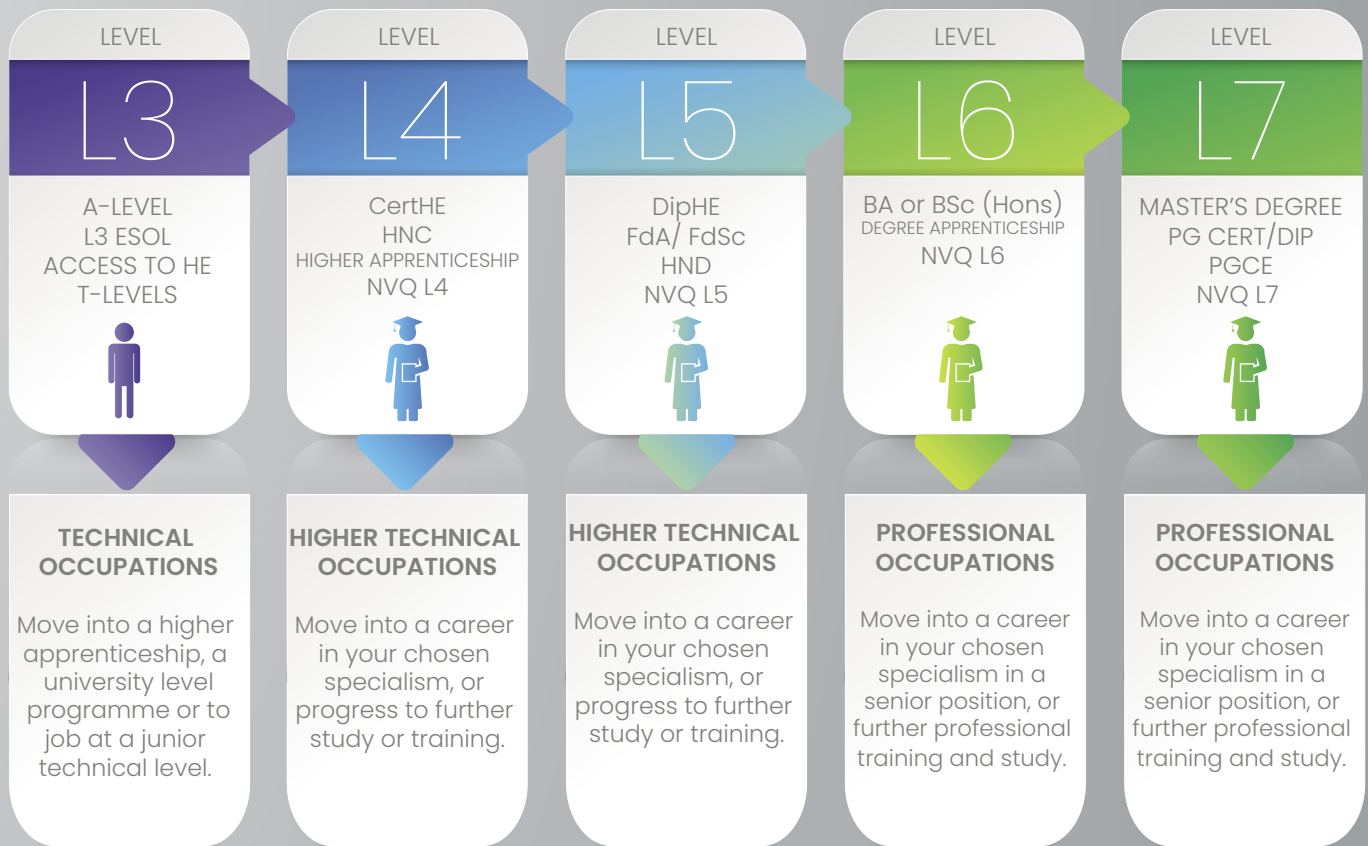
With so many different courses on offer, it can be hard to understand what each one means – not to mention where they lead. The UK education framework offers qualifications starting at Entry Level and finishing at Level 8.

University level programmes at Bradford College start at Level 4 with courses such as HNC or Higher Apprenticeship and continue through to Level 7. Wherever you start on your journey, we have a course for you and your career goal.

Look for this graphic throughout as an example of a progression pathway in your chosen subject speciality.







**Talk to us about your  
aspirations and we will  
help turn your passion  
into a profession.**



TURN YOUR  
PASSION  
INTO A  
PROFESSION

# APPLIED SCIENCES

Biology | Chemistry | Environmental Science





**These statistics  
are related to  
careers in this  
sector:**

9%

Growth in sector  
jobs between  
2010–2019

£16.25/hr  
Median wage

**GRADUATE  
CAREER  
COULD BE...**

**Regulatory  
Scientist  
York**



SCAN HERE  
TO SEE ALL  
COURSE  
INFORMATION



Applied Science is a term that refers to the use of scientific knowledge for practical applications. Studying applied science is beneficial as the discoveries in this field can improve our daily lives, in areas such as healthcare and technology.

Whether you're looking for a pathway in Biology, Chemistry, or Environmental Science we have the perfect two year degree-level course for you.

These programmes are a great start for anyone wishing to learn the knowledge, skills and tools essential to the many facets of applied sciences.

Applied sciences are ideal for those wishing to find employment in the science industries or to progress to further study. These are wide-ranging courses that develops knowledge and skills in the theoretical and practical aspects of sciences.

Learners will develop a wide range of practical skills and good laboratory practice, with an emphasis on laboratory work that complements the detailed study of scientific theory.

You can go on to a wide range of top-up degree programmes, such as Biomedical Science, Environmental Science, or Food Science.

These courses also provide excellent preparation for direct employment in research and technical support work in scientific settings or careers in consultancy.



## HND Applied Sciences (Chemistry)

Study specialist topics such as inorganic, organic and physical chemistry, analytical chemistry, aromatic and carboxyl compounds.

**Application route:** Direct

**Mode:** Full-time or Part-time

**Progression:** Employment or L6 study

Subject to Approval

LEVEL 5



## HND Applied Sciences (Biology)

Learn specialist topics such as biochemistry of macromolecules and metabolic pathways, immunology, and genetics.

**Application route:** Direct

**Mode:** Full-time or Part-time

**Progression:** Employment or L6 study

Subject to Approval

LEVEL 5



## HND Applied Sciences (Water & Wastewater)

Specialising in water, you will study topics such as biotechnology techniques and waste-water management.

**Application route:** Direct

**Mode:** Full-time or Part-time

**Progression:** Employment or L6 study

Subject to Approval

LEVEL 5

### PROGRESSION PATHWAY

L3	L4	L5	L6
Extended Diploma in Applied Science	HND Applied Sciences		BSc (Hons) top-up

The above table is an example of a progression route from Level 3 study at Bradford College. We can offer a pathway through to Level 5 HND after which you can progress to a BSc (Hons) top-up to complete a full Bachelors degree.

For advice tailored to your career ambitions, please talk to our Admissions staff or refer to the Careers Coach on our website.





**#AMBITION  
BRADFORD**



TURN YOUR  
PASSION  
INTO A  
PROFESSION

# PROFESSIONAL

Accountancy | Law |  
Management & Leadership





**These statistics  
are related to  
careers in this  
sector:**

**1.2%**

Growth in sector  
jobs between  
2019–2021

**£37.33/hr**

Median wage for  
Paralegals

**GRADUATE  
CAREER  
COULD BE...**

**Paralegal  
Leeds**



SCAN HERE  
TO SEE ALL  
COURSE  
INFORMATION



Whether you're looking to become a barrister, solicitor, accountant or up-skill into management, we have a range of degree courses and professional qualifications available to help level up your career.

Adaptability, attention to detail and personal drive are what you need to succeed in today's highly competitive, global workplace. The skills you learn from our courses will help propel your career.

Whether you already have formal qualifications or are looking to start an undergraduate degree, we have a flexible approach to teaching and learning to help fit with busy professional and personal lives.

Our accountancy courses will equip you with an in-depth understanding of all areas of accountancy. You'll gain a solid understanding of accounting, financial reporting requirements and the regulatory framework for accounting. Our courses have been designed with careful reference to the needs of the relevant professional accountancy bodies.

Our law programmes recognise the need to provide academically challenging courses which will give you a sound knowledge of legal concepts together with an understanding of the operation of law in society.

The structure of the programmes offers a wide range of exciting career opportunities in the legal and business world.

Leadership and Management is suitable for those at different stages of the professional life-cycle who wish to enhance their individual or organisational leadership and management knowledge and practice. Our courses are designed to accommodate a range of professionals including support or administrative staff, social workers, youth and community workers and health professionals who may wish to move into leadership roles.



LEVEL 4

## AAT Diploma Accounting

This is the third of three AAT Levels which you are required to achieve to become a fully qualified AAT Accounting Technician.

**Application route:** Direct

**Mode:** Part-time

**Progression:** BA (Hons) Accountancy



LEVEL 6

## BA (Hons) Accountancy

You'll develop relevant practical skills to prepare you for employment, such as financial reporting and using industry-standard software.

**Application route:** Direct

**Mode:** Full-time or Part-time

**UCAS Tariff points:** 72-96

**Progression:** Employment or L7 study



LEVEL 5

## FdA Law & Legal Practice

This is a challenging and rewarding course which provides you with a route to legal practice, by combining academic aspects of law with more practical modules and work placements.

**Application route:** Direct or UCAS

**Mode:** Full-time or Part-time

**UCAS Tariff points:** 30-64

**Progression:** LLB (Hons) Law (top-up)



LEVEL 6

## LLB (Hons) Law

Studying Law combines strong academic skills with human interest. With the support of expert tutors and strong industry links, you will be prepared for a successful legal career.

**Application route:** Direct or UCAS

**Mode:** Full-time or Part-time

**UCAS Tariff points:** 72-96

**Progression:** Employment or L7 study





APPRENTICESHIP LEVEL 5

### ILM Management & Leadership Higher Level Apprenticeship

You'll develop key skills required in middle management; learning everything from managing projects and teams, to financial and resource management.

Application route: Direct  
Mode: Part-time  
Progression: Employment or L6 study

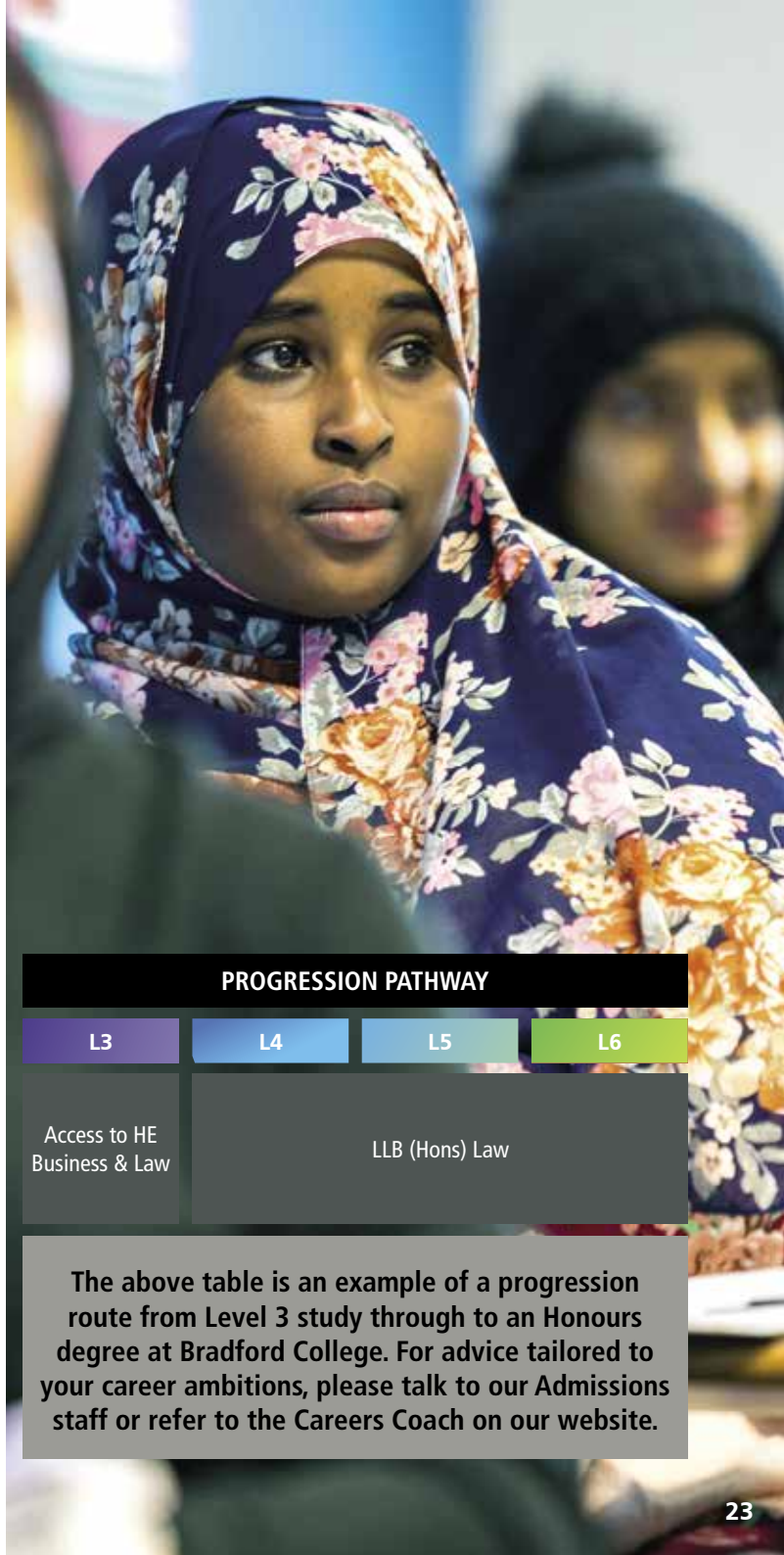


APPRENTICESHIP LEVEL 5

### Operations/Department Manager Higher Level Apprenticeship

This apprenticeship is ideal for those who manage teams or projects and are responsible for achieving operational strategy objectives.

Application route: Direct  
Mode: Full-time  
Progression: Employment or L6 study



PROGRESSION PATHWAY			
L3	L4	L5	L6
Access to HE Business & Law	LLB (Hons) Law		

The above table is an example of a progression route from Level 3 study through to an Honours degree at Bradford College. For advice tailored to your career ambitions, please talk to our Admissions staff or refer to the Careers Coach on our website.



TURN YOUR  
PASSION  
INTO A  
PROFESSION

# COMPUTING & DIGITAL

Networking | Cyber Security | Data Analytics |  
Software Engineering | Systems Management



aws academy

ALSO WORKING WITH:

CISCO

ACCESS LEGAL

COMP TIA PARTNER



**These statistics  
are related to  
careers in this  
sector:**

**2.1%**

Growth in sector  
jobs between  
2019–2021

**£20.03/hr**

Median wage for  
Programmers and  
Software Developers

**GRADUATE  
CAREER  
COULD BE...**

**Desktop  
Infrastructure  
Engineer  
Leeds**



SCAN HERE  
TO SEE ALL  
COURSE  
INFORMATION



Get ready for a job in one of the world's fastest-growing sectors. Modern organisations rely upon good information systems in order to survive in the global competitive business environment. Our university level courses are for students who have an interest in information systems and management, and want to drive digital transformation.

You'll develop the skills you need in your chosen passion, whether that's cyber security or software engineering with your time spent in our state-of-the-art IT rooms with the industry standard equipment. Students completing these programmes will have the knowledge, understanding and expertise to enter employment in various roles ranging from IT Consultancy, artificial intelligence, data analyst, business analysis, product owners (agile).

Bradford College has also joined the prestigious worldwide AWS Academy program from Amazon Web Services (AWS). AWS Academy is a global initiative that provides educational institutions with access to cloud computing content to support student learning in a competitive digital workplace.

Our courses uses a wide range of learning methods with a focus on practical workshops. Use of problem-based exercises and relevant industry scenarios aid this process. You will learn via scheduled time in lectures and tutorials on campus.

In addition you'll have access to a virtual learning environment which provides online access to lectures notes, assignments, suggested reading and other course information. These are designed to allow you to develop your skills and knowledge in a supportive environment.

A range of transferable skills including team working, communication, critical thinking, critical analysis, synthesis, presentation and problem-solving will prove vital when it comes to securing employment.





## BSc (Hons) Information Systems Management\*

Developed in close consultation with industry practitioners, this course will enable you to gain skills in driving digital transformation in organisations.

**Application route:** Direct or UCAS

**Mode:** Full-time or Part-time

**UCAS Tariff points:** 80

**Progression:** Employment or L7 study

LEVEL 6



## BSc (Hons) Networking, Infrastructure & Security\*

The study of secure networked systems, combined with infrastructure and associated services, will provide you with a core set of technical skills and the knowledge to utilise them.

**Application route:** Direct or UCAS

**Mode:** Full-time or Part-time

**UCAS Tariff points:** 80

**Progression:** Employment or L7 study

LEVEL 6



## BSc (Hons) Software Engineering\*

Learn how to plan, manage and develop software whilst adopting an academic and rigorous approach which will support you throughout your career.

**Application route:** Direct or UCAS

**Mode:** Full-time or Part-time

**UCAS Tariff points:** 80

**Progression:** Employment or L7 study

LEVEL 6



## HND Computing (Cyber Security)

This pathway will teach specialist topics such as Forensics, Information Security Management and Applied Cryptography in the Cloud.

**Application route:** Direct

**Mode:** Full-time or Part-time

**Progression:** BSc (Hons) degrees in Computing

Subject to Approval

LEVEL 5





## HND Computing (General)

Study specialist topics including programming, database design, software development, website design and business processing.

**Application route:** Direct

**Mode:** Full-time or Part-time

**Progression:** BSc (Hons) degrees in Computing

Subject to Approval

LEVEL 5



## HND Computing (Data Analytics)

In this pathway, you will study specialist topics such as Website Design & Development, Strategic Information Systems and Data Analytics which can lead into careers such as Business and Data Analyst.

**Application route:** Direct

**Mode:** Full-time or Part-time

**Progression:** Employment or L6 study

Subject to Approval

LEVEL 5

**#AMBITION  
BRADFORD**



\*If you think you'd like more support before studying one of these programmes, we have a foundation year available in these courses to prepare you before entry.



LEVEL 4

## HNC Cloud Computing

This programme will enable students to demonstrate a sound knowledge of the foundational concepts of cloud computing, including hands-on practical experience.

**Application route:** Direct or UCAS

**Mode:** Full-time or Part-time

**UCAS Tariff points:** 48

**Progression:** Employment or L5 study

Subject to Approval



LEVEL 4

## HNC Computing (Data Analytics)

In this pathway you will study specialist topics such as strategic information systems, website design and development, and visualisation.

**Application route:** Direct

**Mode:** Full-time or Part-time

**Progression:** HND Computing (Data Analytics)

Subject to Approval



LEVEL 4

## HNC Computing (General)

Study specialist topics including programming, database design, software development, website design and business processing.

**Application route:** Direct

**Mode:** Full-time or Part-time

**Progression:** BSc (Hons) degrees in Computing

Subject to Approval



LEVEL 4

## HNC Computing (Cyber Security)

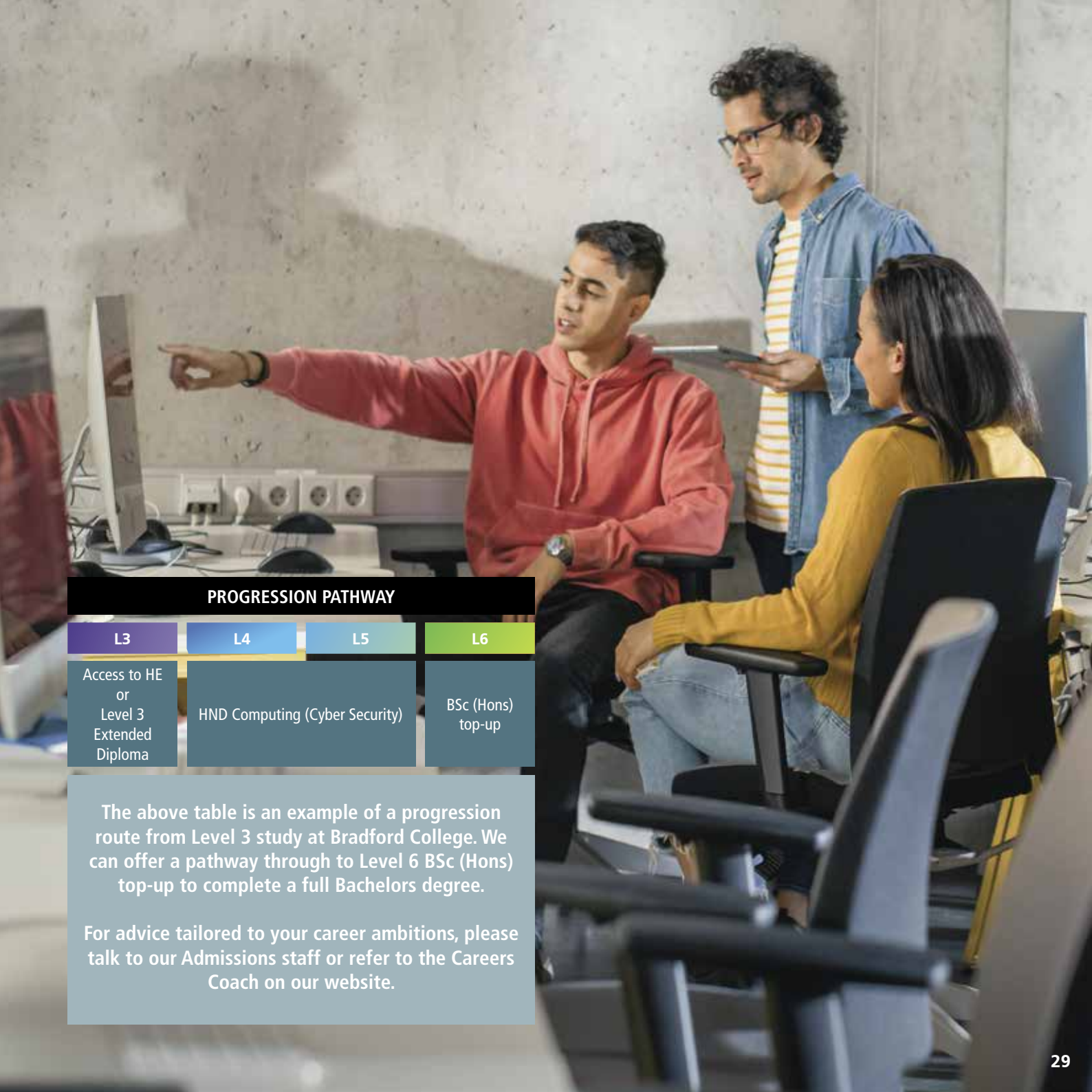
This pathway will teach specialist topics such as Forensics, Information Security Management and Applied Cryptography in the Cloud.

**Application route:** Direct

**Mode:** Full-time or Part-time

**Progression:** HND Computing (Cyber Security)

Subject to Approval



### PROGRESSION PATHWAY

L3	L4	L5	L6
Access to HE or Level 3 Extended Diploma	HND Computing (Cyber Security)		BSc (Hons) top-up

The above table is an example of a progression route from Level 3 study at Bradford College. We can offer a pathway through to Level 6 BSc (Hons) top-up to complete a full Bachelors degree.

For advice tailored to your career ambitions, please talk to our Admissions staff or refer to the Careers Coach on our website.





TURN YOUR  
PASSION  
INTO A  
PROFESSION

# CREATIVE INDUSTRIES

Art | Design | Fashion | Film | Media  
Media Make up & Special Effects | Textiles |







**These statistics  
are related to  
careers in this  
sector:**

**6.2%**

Growth in sector  
jobs between  
2019–2021

**£16.00/hr**

Median wage  
for Creative  
Professionals

**GRADUATE  
CAREER  
COULD BE...**

**Project  
Designer**  
Thorp Arch  
LS23



SCAN HERE  
TO SEE ALL  
COURSE  
INFORMATION

Located in the heart of Bradford is the Bradford School of Art, the art school of choice for some of the country's most noteworthy artists.

For over 100 years the Bradford School of Art has provided an inspiring, illuminating, and supportive learning environment for budding artists, designers, and other creative professionals.

We are proud to have a large team of lecturers who are also seasoned artists, performers, and creative professionals, who pride themselves on providing an outstanding creative education which encourages ingenuity, experimentation and enterprise. We are well respected in the arts industry, with industry links including the Royal Shakespeare Company, Screen Yorkshire, Bradford City of Film, the BFI, BBC, Channel 4, and many more.

Explore your talent in some of the best creative facilities in the North. No matter your preferred discipline, you'll have access to state-of-the-art facilities that include

industry standard creative studios, photography suites, and a TV studio. You'll have frequent opportunities to showcase work in our very own Dye House Gallery, as well as other art spaces across the region.

Exciting industry opportunities in the past have included working behind-the-scenes on the set of The Duke starring Helen Mirren, workshops with the Royal Shakespeare Company, and regular openings to perform at events and venues across the country.





## BA (Hons) Art & Design

Helping you realise your creative vision and industry potential; you will develop your own sustained, innovate and reflective art and design practice.

**Application route:** Direct or UCAS

**Mode:** Full-time or Part-time

**UCAS Tariff points:** 80

**Progression:** MA Visual Arts

LEVEL 6



## BA (Hons) Fashion

You'll be engaged in the whole fashion process, from contemporary fashion design techniques to commercial and creative pattern cutting, and technical applications.

**Application route:** Direct or UCAS

**Mode:** Full-time or Part-time

**UCAS Tariff points:** 80

**Progression:** Employment or L7 study

LEVEL 6



## BA (Hons) Technical & Production Arts for Film & Television

You'll cultivate craft and technical design skills and an understanding of pre-production, production and management skills for film and TV production.

**Application route:** Direct or UCAS

**Mode:** Full-time or Part-time

**UCAS Tariff points:** 80

**Progression:** Employment or L7 study

LEVEL 6



## BA (Hons) Make-up with Special Effects for the Creative Industries

Create make-up and prosthetic special effects for film, TV, fashion and other creative industries, as well as learning techniques to build your professional artistry and expertise.

**Application route:** Direct or UCAS

**Mode:** Full-time or Part-time

**UCAS Tariff points:** 80

**Progression:** Employment or L7 study

LEVEL 6







## Fd Film & Media Production for the Creative Industries

As a UNESCO City of Film, Bradford has a rich film heritage and is a fantastic place to study with industry links stretching across the region and beyond.

**Application route:** Direct or UCAS

**Mode:** Full-time or Part-time

**UCAS Tariff points:** 80

**Progression:** BA (Hons) Top-up

LEVEL 4



## BA (Hons) Textiles Practice (Top-up)

You will have access to wide range of equipment and facilities, from traditional weaving looms to digital textile printers and laser cutters. You will graduate with a versatile blend of skills.

**Application route:** Direct or UCAS

**Mode:** Part-time

**UCAS Tariff points:** 80

**Progression:** MA Visual Arts

Subject to Approval

LEVEL 6



## Fd Textiles Practice

Specifically developed for those wishing to develop professional practice in textile art, contemporary craft and designer-made products.

**Application route:** Direct or UCAS

**Mode:** Part-time

**UCAS Tariff points:** 80

**Progression:** BA (Hons) Top-up

LEVEL 4



## MA Visual Arts

Explore the boundaries of contemporary visual arts practice across a range of media such as 2D/3D media, printmaking, photographic arts, ceramics, sculpture, painting and more.

**Application route:** Direct

**Mode:** Part-time

**Progression:** Employment or further study

LEVEL 7



## PROGRESSION PATHWAY



The above diagram is an example of an academic progression route from Level 3 study at Bradford College. Our School of Art can offer you a pathway through degree level programmes culminating in a Masters in Visual Arts. For advice tailored to your career ambitions, please talk to our Admissions staff or refer to the Careers Coach service on our website.



**TURN YOUR  
PASSION  
INTO A  
PROFESSION**

# MUSIC & PERFORMANCE

Music | Performance |





**These statistics  
are related to  
careers in this  
sector:**

**6.2%**

Growth in sector  
jobs between  
2019–2021

**£36/hr**

Median wage  
for Guitar Teachers

**GRADUATE  
CAREER  
COULD BE...**

**Concert  
Technician:  
Guitar  
London**



SCAN HERE  
TO SEE ALL  
COURSE  
INFORMATION



At The Yorkshire School of Performance and Music, our aim is to offer the highest standard of industry level of training in performing arts and music. The approach at The Yorkshire School of is one of delivering training that is realistic, and not idealistic. Preparing you for the reality of what the industry is like NOW not an ideal of what the industry was. Giving you the tools, knowledge and skills to be able to adapt as the industry develops.

Our degrees have been written by our academic and industry specialists specifically to meet the needs of an ever-changing creative industries landscape and are validated and issued by The University of Bolton.

The Yorkshire School university level programmes have been written to prepare students for the reality of the industry and to make our graduates work-ready.

Our aim is to enable our students to prepare for the reality of working in the Music industry, as well as the wider Creative Industries. This is through teaching students the opportunity to develop vital skills in performance and production, as well as business and entrepreneurial skills

We train our students in classical acting techniques, as offered by most drama schools, but unlike most other centres and drama schools, we also prepare students for the reality of working in television and generating their own work and practice, giving them vital writing, producing, directing, teaching, business and entrepreneurial skills.



**#AMBITION  
BRADFORD**







## FdA Film & Media Production for the Creative Industries

As a UNESCO City of Film, Bradford has a rich film heritage and is a fantastic place to study with industry links stretching across the region and beyond.

**Application route:** Direct or UCAS

**Mode:** Full-time or Part-time

**UCAS Tariff points:** 80

**Progression:** BA (Hons) Top-up

LEVEL 4



## FdA Music for the Creative Industries

This programme underpins the development of your practical skills as a musician with key theories, context and the development of academic skills.

**Application route:** Direct or UCAS

**Mode:** Full-time or Part-time

**UCAS Tariff points:** 80

**Progression:** BA (Hons) Music (top-up)

LEVEL 4



## FdA Performing Arts

This programme will immerse you in the industry by providing opportunities to learn from and work with local, regional and national arts organisations.

**Application route:** Direct or UCAS

**Mode:** Full-time or Part-time

**UCAS Tariff points:** 80

**Progression:** BA (Hons) Performance (top-up)

LEVEL 4



## BA (Hons) Performance (Top-up)

Develop skills in all aspects of performing before specialising in your preferred discipline. You will work with students from other Arts courses on exciting and inspiring projects.

**Application route:** Direct or UCAS

**Mode:** Full-time or Part-time

**UCAS Tariff points:** 120

**Progression:** Employment or L7 study

LEVEL 6



## BA (Hons) Music for the Creative Industries (Top-up)

You will benefit from links with venues and organisations around the city, resulting in us staging gigs and events in spaces that will enrich your learning experience.

**Application route:** Direct or UCAS

**Mode:** Full-time or Part-time

**UCAS Tariff points:** 120

**Progression:** Employment or L7 study

LEVEL 6

### PROGRESSION PATHWAY

L3	L4	L5	L6
Extended Diploma in Performing Arts	FdA Performing Arts		BA (Hons) Top-up

The above table is an example of a progression route from Level 3 study at Bradford College. We can offer a pathway through Foundation Degree after which you can progress to a BA (Hons) top-up to complete a full Bachelors degree.

For advice tailored to your career ambitions, please talk to our Admissions staff or refer to the Careers Coach on our website.



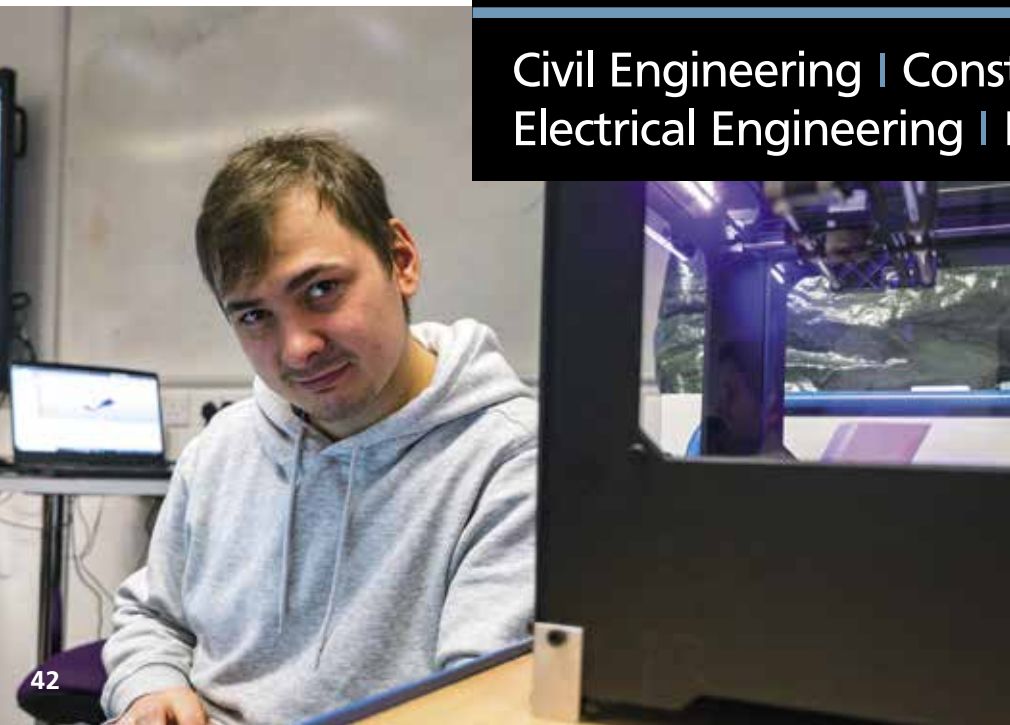




TURN YOUR  
PASSION  
INTO A  
PROFESSION

## ENGINEERING & CONSTRUCTION

Civil Engineering | Construction Management |  
Electrical Engineering | Mechanical Engineering |





**These statistics  
are related to  
careers in this  
sector:**

**2.5%**

Growth in sector  
jobs between  
2019–2021

**£30.76/hr**

Median wage for  
Senior Engineers

**GRADUATE  
CAREER  
COULD BE...**

**Engineering  
Manager**  
Cleckheaton



SCAN HERE  
TO SEE ALL  
COURSE  
INFORMATION

Our courses in construction and engineering offer you the chance to get a graduate career in the fast lane. These degree qualifications are applied, getting you the skills to upgrade your career potential in your chosen sector, whether in commercial construction, engineering and manufacturing, aerospace or automotive industries.

We work in partnership with Bradford University, so you'll get access to their laboratories and workshops, and if you want to keep studying you can top-up your HND to a full Honours degree with one extra year of study.

Learn the latest skills and apply theory learned from our expert team on live projects as part of your course. If you're working you can study part-time, we make it as flexible as possible to improve your knowledge and skills on our state-of-the-art facility at the Trinity Green campus in the heart of Bradford.

Bradford College has strong links to industry, so you'll hear from guest speakers and go on industry-relevant field trips. Our courses will provide you with an excellent foundation to progress in careers in construction, mechanical engineering, electrical and electronic engineering.

This is an in-demand area of work, and we will support you to gain the necessary skills to begin a successful and lifelong career in this sector.





## BSc (Hons) Civil Engineering Project Management (Top-up)

You'll develop your understanding of civil engineering in different contexts and the ability to apply a variety of methods and skills in real-life scenarios.

**Application route:** Direct or UCAS  
**Mode:** Full-time or Part-time  
**UCAS Tariff points:** 120  
**Progression:** Employment or L7 study

LEVEL 6



## BSc (Hons) Construction Management (Top-up)

This one-year programme is for those who wish to top-up to a full Honours degree. You'll learn a mix of specialist and practical skills using the latest equipment and technology.

**Application route:** Direct or UCAS  
**Mode:** Full-time or Part-time  
**UCAS Tariff points:** 120  
**Progression:** Employment or L7 study

LEVEL 6



## HNC Construction & the Built Environment (Civil Engineering)

Tailored to those with ambitions of working in a professional, managerial, or technical capacity as site managers.

**Application route:** Direct or UCAS  
**Mode:** Full-time or Part-time  
**UCAS Tariff points:** 80  
**Progression:** HND Civil Engineering

LEVEL 4



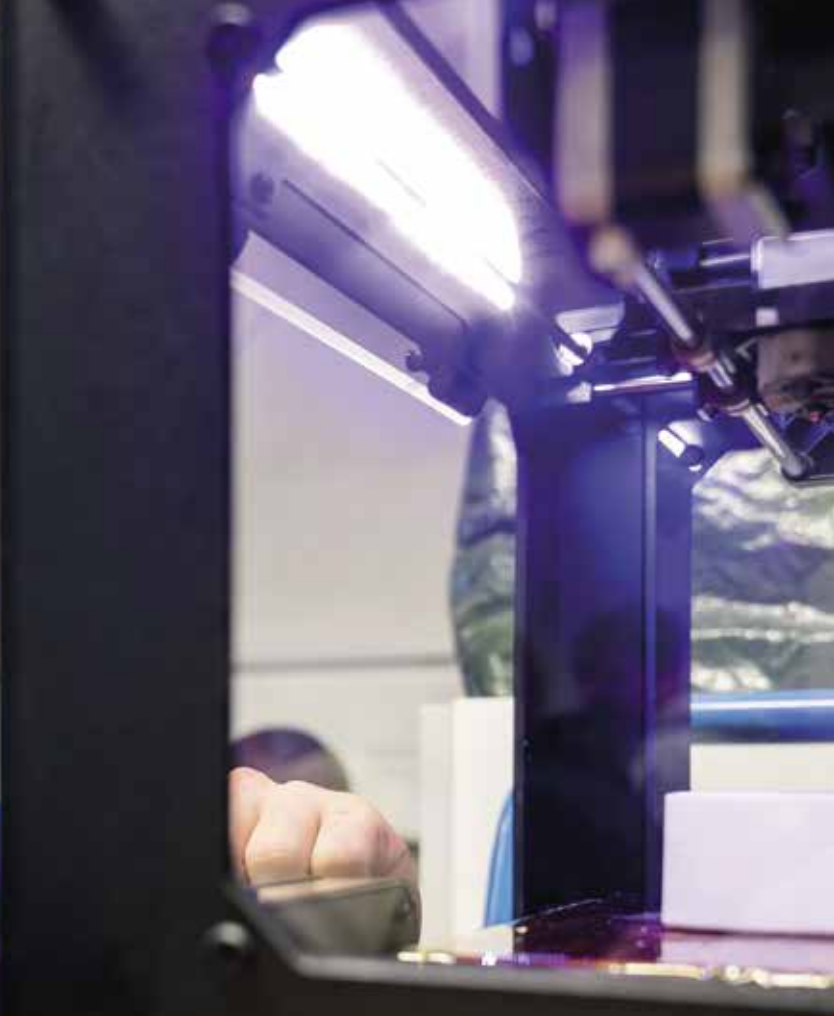
## HND Construction & the Built Environment (Civil Engineering)

This qualification is designed to provide you with a wider knowledge of civil engineering, with a staff who have diverse experience in a variety of construction professions.

**Application route:** Direct or UCAS  
**Mode:** Full-time  
**UCAS Tariff points:** 80  
**Progression:** BSc (Hons) Civil Engineering Project Management (top-up)

LEVEL 5





#### PROGRESSION PATHWAY

L3	L4	L5	L6
Extended Diploma in Civil Engineering	HNC	HND	BSc (Hons) Top-up

The above table is an example of a progression route from Level 3 study in Civil Engineering at Bradford College. We offer a pathway that takes you from HNC through to a Level 6 BSc (Hons) top-up so you can progress at your own pace.



## **HNC Engineering (Electrical & Electronic Engineering)**

LEVEL 4

You'll benefit from strong industry connections, guest speakers and quality field trips combined with theoretical learning and workshop time.

Application route: Direct or UCAS  
Mode: Full-time or Part-time  
UCAS Tariff points: 80  
Progression: HND



## **HND Engineering (Electrical & Electronic Engineering)**

LEVEL 5

This Pearson Level 5 qualification is designed to provide you with a wider knowledge of engineering principles and methodology to prepare you for employment opportunities.

Application route: Direct or UCAS  
Mode: Full-time  
UCAS Tariff points: 80  
Progression: Employment or L6 study



## **HNC Engineering (Mechanical Engineering)**

LEVEL 4

You'll benefit from strong industry connections, guest speakers and quality field trips combined with theoretical learning and workshop time.

Application route: Direct or UCAS  
Mode: Full-time or Part-time  
UCAS Tariff points: 80  
Progression: HND



## **HND Engineering (Mechanical Engineering)**

LEVEL 5

This course will offer you a wider knowledge of engineering principles and methodology to prepare you for employment opportunities in the mechanical engineering field.

Application route: Direct or UCAS  
Mode: Full-time  
UCAS Tariff points: 80  
Progression: Employment or L6 study



## HNC Construction & the Built Environment (Construction)

You'll gain a wider knowledge of construction and civil engineering principles and methodology, and develop analytical and research skills to prepare you for employment.

Application route: Direct  
Mode: Full time or Part-time  
Progression: HND

LEVEL 4





TURN YOUR  
PASSION  
INTO A  
PROFESSION

# HEALTH SCIENCES

Ophthalmics | Pharmacy | Dental Practice





**These statistics  
are related to  
careers in this  
sector:**

**1.8%**

Growth in sector  
jobs between  
2019–2021

**£22.56/hr**

Median wage for  
Ophthalmic  
Nurses

**GRADUATE  
CAREER  
COULD BE...**

**Dispensing  
Optician  
Bradford**

We are proud that our Health Sciences department hosts a family of professional health programmes which will prepare you for your future professional careers. Study with us and you'll have every opportunity to hone your practical skills. Our latest facilities include a virtual teaching suite and a range of clinical practice rooms to facilitate simulated teaching.

Health science is an interdisciplinary field that involves applying concepts from the natural and social sciences to aspects of health, disease, and healthcare. Health science includes a wide range of careers from patient care to medical testing and healthcare management.



SCAN HERE  
TO SEE ALL  
COURSE  
INFORMATION

Our university level courses cover the disciplines of ophthalmology, pharmaceutical science and dentistry.

Ophthalmics programmes offer students great insight into the study of the eyes, physiology and anatomy. Candidates will learn about lenses, biology, mathematics for science, vision management and assessment and optics of the eye, as well as dispensing and contact lenses.

Our pharmacy courses offer post registration qualifications for registered pharmacy technicians in a range of healthcare settings.

The Dental Practice apprenticeship will provide knowledge on HR, patient care, marketing, Quality Assurance, risk management and the dental industry. You will understand key techniques in leadership, management and communication.





LEVEL 6

## BSc (Hons) Ophthalmic Dispensing

If you wish to become a qualified and registered dispensing optician, this course is for you. Successful final exam completion will allow the use of suffix FBDO (Fellowship of the Association of British Dispensing Opticians).

Application route: Direct or UCAS

Mode: Full-time

UCAS Tariff points: 64

Progression: Employment or L7 study



LEVEL 6

## Blended Learning Diploma in Ophthalmic Dispensing

You will learn the skills to achieve Fellowship of the Association of British Dispensing Opticians and become a General Optical Council Registered Dispensing Optician through a programme of distance learning and face-to-face study

Application route: Direct

Mode: Part-time



LEVEL 5

## FdSc Ophthalmic Dispensing

You will learn the skills to achieve Fellowship of the Association of British Dispensing Opticians and become a General Optical Council Registered Dispensing Optician.

Application route: Direct

Mode: Full-time or Part-time

UCAS Tariff points: 64

Progression: BSc (Hons) Ophthalmic Dispensing (Top-up)



DIPLOMA

## Low Vision Diploma

For those who have a specialist interest in working with patients who are visually impaired, this course will prepare you to take the theory exams and prepare you for the ABDO practical assessment.

Application route: Direct

Mode: Part-time





## Contact Lens Certificate

Aimed at dispensing opticians who are full members of ABDO. This course will fully prepare you to take the ABDO Contact Lens Anatomy, Contact Lens Visual Optics and Contact Lens Practice theoretical and practical examinations.

Application route: Direct

Mode: Part-time

CERTIFICATE





## Pharmacy Accredited Checking Training (ACT)

CERTIFICATE

This course aims to make sure that you are confident and clear in checking the accuracy of prescriptions, and complying with current legislation and good practice in pharmacy.

Application route: Direct  
Mode: Part-time



## Dental Practice Manager Apprenticeship

APPRENTICESHIP

This apprenticeship will provide knowledge on all aspects of managing a dental practice.

Application route: Direct  
Mode: Apprenticeship  
Progression: Employment or L5 study

### PROGRESSION PATHWAY

L3	L4	L5	L6
A-Level Science Pathway	FdSc Ophthalmic Dispensing		BSc (Hons) Top-up

The above diagram is an example of an academic progression route from Level 3 study at Bradford College. We can offer you a pathway through degree level programmes culminating in a BSc (Hons) Top-up qualification.

For advice tailored to your career ambitions, please talk to our Admissions staff or refer to the Careers Coach service on our website.



## BTEC Professional Diploma in Pharmacy Clinical Services

DIPLOMA

You will be working within a clinical pharmacy environment in primary care, secondary care or community pharmacy designed to further develop pharmacy clinical professionals.

Application route: Direct  
Mode: Part-time





TURN YOUR  
PASSION  
INTO A  
PROFESSION

# HOSPITALITY & TOURISM

Catering | Hospitality Management |  
Travel & Tourism





**These statistics  
are related to  
careers in this  
sector:**

1,247,000

Vacancies in  
Oct to Dec 2021

£20.51/hr

Median wage for  
Restaurant Chefs

**GRADUATE  
CAREER  
COULD BE...**

**Head Chef**  
Ben Rhydding  
LS29



SCAN HERE  
TO SEE ALL  
COURSE  
INFORMATION



The hospitality and tourism sectors are one of the largest employers in the UK and entering the industry with a degree-level qualification can enable progression within the broad range of businesses that operate in the industries.

As we emerge from a global pandemic, international travel and hospitality is opening again. Eco and sustainable tourism is becoming more popular as people consider the impact of travel and human behaviours on the natural world. Studying a hospitality or tourism programme at this level will enable you to gain the transferable skills that will offer you sound career opportunities in a growing industry.

BTEC is one of the world's most recognised learning brands, providing Higher National qualifications that are designed to address an increasing need for high quality professional and technical education pathways at Levels 4 and 5, providing you with a clear line of sight to employment or progression to further study.

This sector is important and brings enormous benefits to the British economy in terms of inbound tourism. There are some fantastic graduate programmes being offered by leading companies regionally, nationally, and internationally.

Studying a university level course in this sector will enable you to develop a range of transferable skills to ensure effective team working, independent initiatives, organisational competence, and problem-solving strategies.

You will be adaptable and flexible in your approach to the hospitality industry, show resilience under pressure, and demonstrate a sound knowledge of the concepts and characteristics in this industry.



LEVEL 4

## HNC International Travel & Tourism Management

You'll learn about the contemporary travel and tourism industry as well as core skills such as leadership and management.

**Application route:** Direct

**Mode:** Full-time or Part-time

**Progression:** HND International Travel & Tourism Management

Subject to Approval



LEVEL 4

## HNC Hospitality Management

Designed to establish and develop your career within the hospitality industry, you will also earn core management skills.

**Application route:** Direct

**Mode:** Full-time or Part-time

**Progression:** HND Hospitality Management

Subject to Approval



LEVEL 5

## HND International Travel & Tourism Management (Events)

You'll extend your knowledge of the travel and tourism industry and enhance your career prospects and employability.

**Application route:** Direct

**Mode:** Full-time or Part-time

**Progression:** Employment or L6 study

Subject to Approval



LEVEL 5

## HND Hospitality Management (Food & Beverage)

This Level 5 programme will extend your knowledge and career prospects within the hospitality industry.

**Application route:** Direct

**Mode:** Full-time or Part-time

**Progression:** Employment or L6 study

Subject to Approval





#### PROGRESSION PATHWAY

L3	L4	L5	L6
NCFE Diploma in Travel, Aviation, Hospitality & Events	HNC Hospitality Management	HND Hospitality Management	BA (Hons) Top-up

The above diagram is an example of an academic progression route from Level 3 study at Bradford College. Moving through HNC and HND levels in your own time, you can progress to an Honours degree Top-up programme in a related field such as Business or Management.



**TURN YOUR  
PASSION  
INTO A  
PROFESSION**

## **SOCIAL SCIENCES & COMMUNITY**

**Counselling & Psychology | Early Years |  
Health & Social Welfare | Social Work |**





**These statistics  
are related to  
careers in this  
sector:**

**13%**

Growth in sector  
jobs between  
2016–2026

**£27.74/hr**

Median wage for  
Counsellors

**GRADUATE  
CAREER  
COULD BE...**

**Student  
Counsellor**  
London  
WC2A



SCAN HERE  
TO SEE ALL  
COURSE  
INFORMATION



Our School of Social Sciences & Community Practice is a collective of practitioners with many years experience, dedicated to supporting you into graduate careers in this vital and rewarding sector. Housed in Lister - our university courses building - you will learn with people who share a common goal, working to support people's lives when they need it the most.

Working in social care and community courses can be challenging and incredibly rewarding. Services and roles are changing rapidly and there are increased demands on staff to deliver high quality, safe and compassionate care, develop new skills and keep up-to-date with training.

Studying counselling and psychology has never been more important as the therapeutic value of counselling is increasingly recognised, with practitioners employed in settings such as health and social care services, advisory organisations, charities and helplines, alongside private practice.

Social workers support and protect society's most vulnerable people. If you're looking to work with those in need; from children and the elderly to individuals or families, our social work and related courses have much to offer.

We also offer a range of programmes in the early years sector, for example, in childhood and youth studies or early childhood, which can open up a range of careers, including: childcare, counselling, early years work, youth and community work, and local, national and international policy development.





## BA (Hons) Early Years Practice: The Whole Child

You will gain the knowledge and skills that are essential for providing quality early years education and care, within diverse communities and school settings.

**Application route:** Direct or UCAS  
**Mode:** Full-time  
**UCAS Tariff points:** 80  
**Progression:** Employment or L7 study

LEVEL 6



## BA (Hons) Health & Social Welfare

With emphasis on the importance of health and social welfare within communities; you'll study contrasting perspectives and examine how social, cultural, political and economic factors affect individuals and groups.

**Application route:** Direct or UCAS  
**Mode:** Full-time or Part-time  
**UCAS Tariff points:** 80  
**Progression:** Employment or L7 study

LEVEL 6



## Higher Level Early Years Apprenticeship

Throughout this apprenticeship, you'll learn the essential knowledge needed to work with children in many different early years settings, such as safeguarding, health, wellbeing and development.

**Application route:** Direct  
**Mode:** Full-time or Part-time  
**Progression:** Employment or L6 study  
 Subject to Approval

APPRENTICESHIP



## BA (Hons) Counselling & Psychology in Community Settings

This degree combines high level counselling skills with psychological understanding to give you a range of insights and perspectives on human behaviour, and challenges.

**Application route:** Direct  
**Mode:** Full-time  
**UCAS Tariff points:** 96  
**Progression:** Employment or L7 study

LEVEL 6





## BA (Hons) Social Work

Our social work degree is designed to equip you with the essential knowledge and practical experience that every social worker needs. This programme is approved by the professional body Social Work England.

**Application route:** Direct  
**Mode:** Full-time  
**UCAS Tariff points:** 120  
**Progression:** Employment or L7 study

LEVEL 6



## HNC Social & Community Work

This Level 4 programme will extend your knowledge and career prospects within this field.

**Application route:** Direct  
**Mode:** Full-time or Part-time  
**Progression:** Entry to year 2 of Honours degree  
 Subject to Approval

LEVEL 4



## FdA Supporting & Managing Learning in Early Years

This course offers you a flexible programme of academic study to develop your skills and knowledge in the early years and the education sector.

**Application route:** Direct  
**Mode:** Full-time or Part-time  
**UCAS Tariff points:** 48  
**Progression:** Employment or L7 study

LEVEL 5

### PROGRESSION PATHWAY

L3	L4	L5	L6	L7
A-Level Social Sciences Pathway	BA (Hons) Early Years Practice: The Whole Child			Masters in Education

The above diagram is an example of an academic progression route from A-Level study at Bradford College. We can offer you a pathway through Honours degree culminating in a Masters in Education.

For advice tailored to your career ambitions, please talk to our Admissions staff or refer to the Careers Coach service on our website.





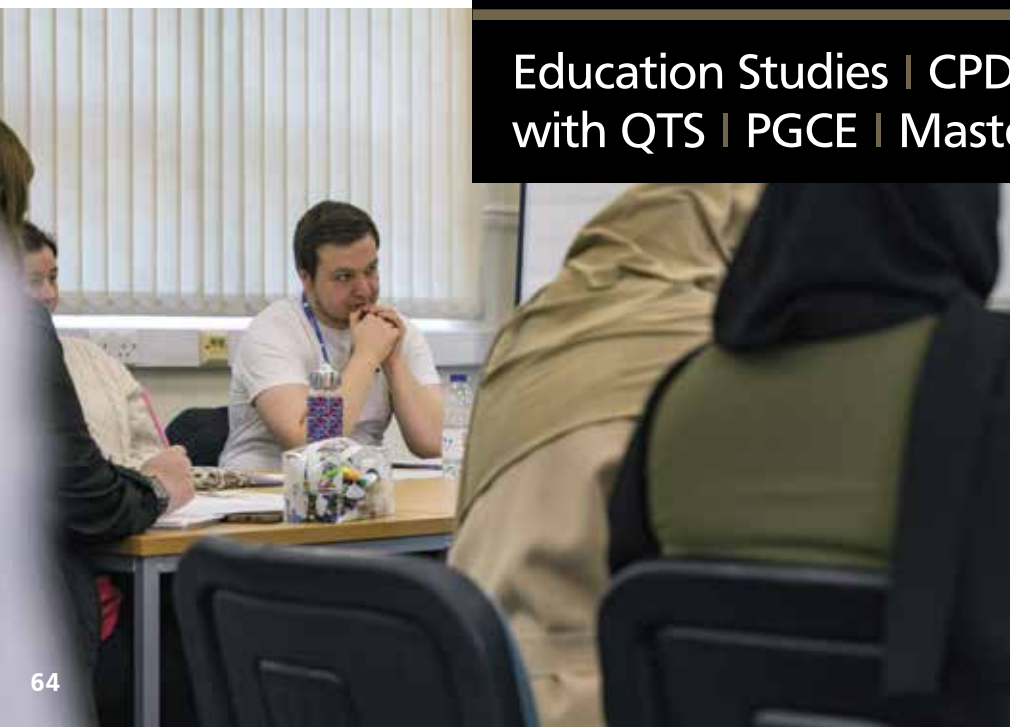
Margaret  
McMillan  
School of  
Education



TURN YOUR  
PASSION  
INTO A  
PROFESSION

# TEACHING & EDUCATION

Education Studies | CPD | Primary & Secondary  
with QTS | PGCE | Masters in Education





**These statistics  
are related to  
careers in this  
sector:**

**9%**

above National  
average number of  
jobs 2019–2021

**£23.07/hr**

Median wage  
for teaching  
professionals

**GRADUATE  
CAREER  
COULD BE...**

**Assistant  
Lecturer in  
Psychology  
Coventry**



SCAN HERE  
TO SEE ALL  
COURSE  
INFORMATION

Do you want to inspire the next generation and transform lives?  
A career in teaching and education will bring you the satisfaction of  
supporting people to grow and develop.

The McMillan School of Education has been providing an extensive range  
of higher education courses for over 35 years. Whether you're switching  
careers, bringing your industry experience into teaching or want to start  
your career journey, we have the courses, support and expertise to help  
you in this important sector.

We provide our learners with an  
interesting and thought-provoking  
range of courses and CPD modules,  
which will assist in your journey.

range of educational settings,  
such as training and social care  
organisations, working with children,  
families and communities.

These include foundation degrees,  
which give you the skills and creative  
exploration to find your specialist  
field. From a foundation degree you  
can progress to a BA (top-up) course  
awarding you a full Bachelor Degree.

You'll discover how the environment  
shapes learning and understand how  
you can make a difference to the  
wellbeing and future of individuals.

Education studies can lead to  
careers in administration, teaching  
and learning support within a wide







AWARD

## **Award in Internal Quality Assurance of Assessment Processes and Practice**

This qualification will enable you to understand key principles and practices involved in internal quality assurance.

**Application route:** Direct

**Mode:** Full-time or Part-time

**Progression:** Employment or L5 study



LEVEL 6

## **BA (Hons) Education Studies**

This degree offers a breadth of learning experiences providing you with the multi-professional development essential to pursue a career in educational settings.

**Application route:** Direct or UCAS

**Mode:** Full-time

**UCAS Tariff points:** 80

**Progression:** Employment or L7 study



LEVEL 6

## **BA (Hons) Primary Education with QTS**

As a trainee teacher, you will be prepared to teach within the primary age range in your chosen age group: 3-7, 5-11 or 7-11.

**Application route:** Direct or UCAS

**Mode:** Full-time

**UCAS Tariff points:** 96

**Progression:** Employment or L6 study



LEVEL 6

## **BA (Hons) Teaching & Learning in the Primary Phase with QTS**

This course is one of very few qualifications in the country where you can gain qualified teacher status (QTS) alongside a degree qualification.

**Application route:** Direct or UCAS

**Mode:** Full-time

**UCAS Tariff points:** 96

**Progression:** Employment or L6 study



LEVEL 6

## **BA (Hons) Supporting & Managing Learning in Education (Top-up)**

Following Level 5 study, you can top-up to a full Honours degree. Your study will be contextualised, so is suitable for those working in early years, Primary or Secondary schools, or colleges.

**Application route:** Direct or UCAS  
**Mode:** Full-time or Part-time  
**Progression:** Employment or L7 study



AWARD

## **Certificate for Advanced Practitioner in School & College**

If you want to work with children and young adults, this course will allow you to develop the key skills needed to successfully enter the world of teaching and education.

**Application route:** Direct  
**Mode:** Full-time or Part-time  
**Progression:** Employment or L5 study





LEVEL 5

## Fd Supporting & Managing Learning in Education

This course offers you a flexible programme of academic study to develop your skills and knowledge of the education sector.

**Application route:** Direct or UCAS

**Mode:** Full-time or Part-time

**UCAS Tariff points:** 48

**Progression:** BA (Hons) Supporting and Managing Learning in Education (top-up)



LEVEL 7

## Master of Education (Inclusive Practice)

The ME pathways are flexible programmes for those working in or looking to pursue a career in education settings, who want to enhance their individual or organisational practice or progress to a leadership role.

**Application route:** Direct

**Mode:** Full-time or Part-time

**Progression:** Employment or further study



APPRENTICESHIP

## Higher Level Teaching Apprenticeships

Throughout this apprenticeship, you'll learn the essentials needed to work in different teaching settings, including safeguarding, health, wellbeing, and development.

**Application route:** Direct

**Mode:** Apprenticeship

**Progression:** Employment or L6 study



LEVEL 6

## BA (Hons) Teaching & Learning in the Primary Phase with QTS

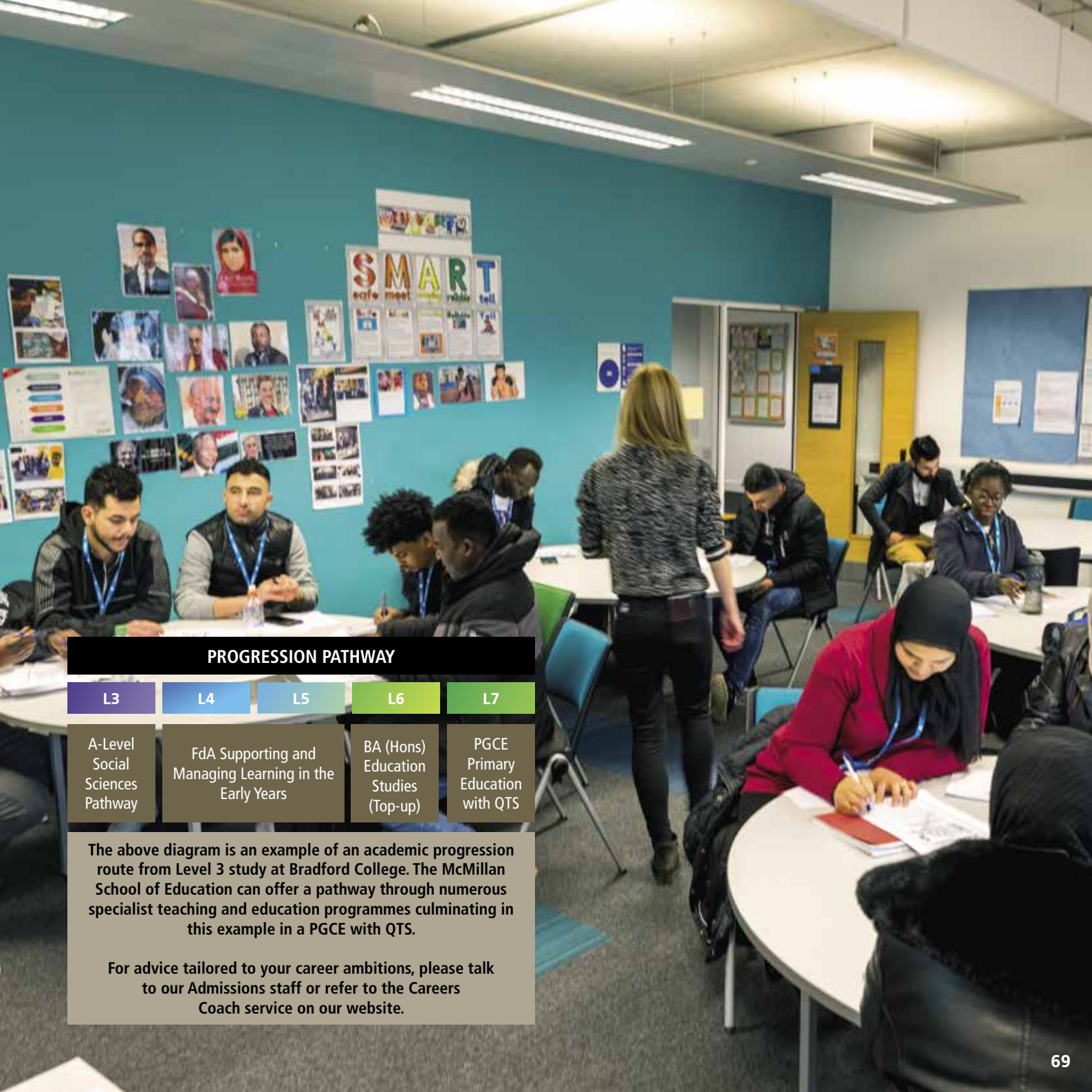
This programme offers a breadth of learning experiences in order to provide you with the multi-professional development essential to pursue a career in teaching.

**Application route:** Direct

**Mode:** Full-time or Part-time

**Progression:** Employment or L7 study





### PROGRESSION PATHWAY

L3	L4	L5	L6	L7
A-Level Social Sciences Pathway	FdA Supporting and Managing Learning in the Early Years		BA (Hons) Education Studies (Top-up)	PGCE Primary Education with QTS

The above diagram is an example of an academic progression route from Level 3 study at Bradford College. The McMillan School of Education can offer a pathway through numerous specialist teaching and education programmes culminating in this example in a PGCE with QTS.

For advice tailored to your career ambitions, please talk to our Admissions staff or refer to the Careers Coach service on our website.



## PGCE Primary Education with QTS

This course offers teacher training, equipping you with Qualified Teacher Status allowing you to work within a primary setting.

**Application route:** Direct

**Mode:** Full-time

**Progression:** Employment or further study

LEVEL 7



## PGCE Secondary Education with QTS

This PGCE offers teacher training, equipping you with Qualified Teacher Status. You will develop specific knowledge related to the pathway you specialise in.

**Application route:** Direct

**Mode:** Full-time

**Progression:** Employment or further study

LEVEL 7



## PGDip Education & Training

You will be able to gain QTLS (Qualified Teacher, Learning and Skills) status awarded by the Society for Education and Training.

**Application route:** Direct

**Mode:** Full-time or Part-time

**Progression:** Employment or further study

LEVEL 6



## PG Dip Teaching ESOL/Literacy/ Numeracy

Whether you'd like to teach Literacy and ESOL or Numeracy, this course will help you to advance in your career.

**Application route:** Direct

**Mode:** Full-time or Part-time

**Progression:** Employment or further study

LEVEL 7



## Return to Teaching / Preparation for QTS Assessment Only

This route is designed for people with considerable school-based experience who wish to gain QTS (Qualified Teacher Status) without an academic award such as a PGCE.

**Application route:** Direct

**Mode:** Full-time or Part-time

**Progression:** Employment or further study

LEVEL 7



## Master of Education (Leadership & Management)

If you're looking to enhance your individual or organisational practice or progress into a leadership role, the course modules can be tailored to reflect the needs of your working context.

**Application route:** Direct

**Mode:** Part-time

**Progression:** Employment or further study

LEVEL 7







TURN YOUR  
PASSION  
INTO A  
PROFESSION

# SPORT & PUBLIC SERVICES

Sport | Public Services |





**These statistics  
are related to  
careers in this  
sector:**

**33%**  
of workers in sport  
are aged under 29

**£14.08/hr**  
Median wage for  
Public Sector

**GRADUATE  
CAREER  
COULD BE...**

**Intelligence  
Officer**  
Companies  
House



SCAN HERE  
TO SEE ALL  
COURSE  
INFORMATION



These programmes are aimed at those looking for a career in sports coaching, health and fitness, the wider active leisure sector, or public services.

The qualifications will develop students as professional, self-reflecting individuals able to meet the demands of employment, with emphasis on excellent practical skill development alongside traditional underpinning knowledge. Students will work in practical, hands on environments, giving multiple opportunities to master skills and apply theory.

You will also have the opportunity to achieve industry recognised qualifications to further boost employability.

There is now a greater emphasis on employer engagement and work readiness and these HNC and HND qualifications are designed to reflect this, increasing the need for high quality professional and technical education pathways, engaging in practical, interpersonal and thinking skills.

You will first and foremost develop your team-working and leadership skills, as both will be vital in your future career.

If you choose Public Services as your pathway, you will be taught by ex-service personnel who are also fully qualified, graduate teachers.

The twin aims of practical skills combined with academic underpinnings will be achieved through lectures, research, practical activities, field trips, guest speakers, observed and assignment based assessments.



LEVEL 4

## HNC Sport & Exercise Science

Work in a practical, hands-on environment with real clients giving you the opportunity to master skills and apply theory. This course is developed with employers and is CIMSPA accredited.

**Application route:** Direct or UCAS  
**Mode:** Full-time or Part-time  
**UCAS Tariff points:** 80  
**Progression:** Employment or L5 study

Subject to Approval



LEVEL 4

## HNC Public Services

This Level 4 course is delivered by ex-service personnel to develop your practical skills combined with academic underpinnings.

**Application route:** Direct or UCAS  
**Mode:** Full-time  
**UCAS Tariff points:** 80  
**Progression:** Employment or L5 study

Subject to Approval



LEVEL 5

## HND Public Services

You will expand on your team-working and leadership skills, and be challenged academically, with all lectures being delivered from ex-service personnel who are also fully qualified teachers.

**Application route:** Direct or UCAS  
**Mode:** Full-time  
**UCAS Tariff points:** 80  
**Progression:** Employment or L6 study

Subject to Approval

### PROGRESSION PATHWAY

L3	L4	L5	L6
A-Level Health Pathway	HNC Public Services	HND Public Services	BSc (Hons) Top-up

The above diagram is an example of an academic progression route from Level 3 study at Bradford College. We can offer you a pathway through HNC and HND programmes with the opportunity to top-up to a full Honours degree at another institution or directly enter employment.

For advice tailored to your career ambitions, please talk to our Admissions staff or refer to the Careers Coach service on our website.







**TURN YOUR  
PASSION  
INTO A  
PROFESSION**

## **ACCESS TO HIGHER EDUCATION**

**Art & Design | Media | Law | Computing | Health  
Business | Nursing | Science**





**YOU COULD  
PROGRESS TO:**

**HNC  
HND  
BA (Hons)  
BSc (Hons)**

**IN YOUR CHOSEN  
SUBJECT**

We offer a diverse range of Access to Higher Education (HE) courses which will put you on the right path for your dream career.

The Access Diploma is a Level 3 qualification which will enable you to progress to university-level study regardless of your grades from prior education. There's no upper age limit to study an Access programme and it typically takes one year to finish your course.

Our Access courses are recognised by universities across the UK and allow entry on to higher education courses in your chosen specialist area.

During your time as an Access student, you'll have the opportunity to participate in course-related field trips and attend lectures from professionals in your chosen career sector, providing you with the perfect foundation for further university-level studies.

With small class sizes, and all the individual support you need to get back into education, you'll build the skills, knowledge, and confidence you need to succeed and reach your goal.



SCAN HERE  
TO SEE ALL  
COURSE  
INFORMATION







## Art, Design & Media

You will gain experience in 2D and 3D within a range of disciplines. Upon completion, you can select a specialist pathway for your undergraduate study.

**Application route:** Direct

**Mode:** Full-time or Part-time

**Progression:** Employment or L4 study

LEVEL 3



## Allied Health Professionals

From this pathway, you may progress onto a degree in a variety of health-related subjects.

**Application route:** Direct

**Mode:** Full-time or Part-time

**Progression:** Employment or L4 study

LEVEL 3



## Business & Law

This programme allows progress to careers in HR or business management and provides an excellent academic foundation to pursue a career in law.

**Application route:** Direct

**Mode:** Full-time or Part-time

**Progression:** Employment or L4 study

LEVEL 3



## Childhood Studies & Education

This pathway is designed for those who wish to pursue a career working with children.

**Application route:** Direct

**Mode:** Full-time or Part-time

**Progression:** Employment or L4 study

LEVEL 3



## Health & Social Care

You will study units covering a breadth of areas such as psychology, healthcare, social welfare, and nutrition.

**Application route:** Direct

**Mode:** Full-time or Part-time

**Progression:** Employment or L4 study

LEVEL 3



LEVEL 3

## Nursing & Midwifery

You will learn the core biology and health modules which will allow you to progress onto undergraduate study in this specialist area.

**Application route:** Direct

**Mode:** Full-time or Part-time

**Progression:** Employment or L4 study



LEVEL 3

## Social Sciences

This course combines key study topics in sociology and psychology which allows you to progress to undergraduate study related to these areas.

**Application route:** Direct

**Mode:** Full-time or Part-time

**Progression:** Employment or L4 study



LEVEL 3

## Science

We offer three different pathways in science with subject combinations from all disciplines.

**Application route:** Direct

**Mode:** Full-time or Part-time

**Progression:** Employment or L4 study



LEVEL 3

## Computing

A key feature of this programme is the development of practical skills. This allows you to progress to degrees such as Software Engineering or Computer Science.

**Application route:** Direct

**Mode:** Full-time or Part-time

**Progression:** Employment or L4 study









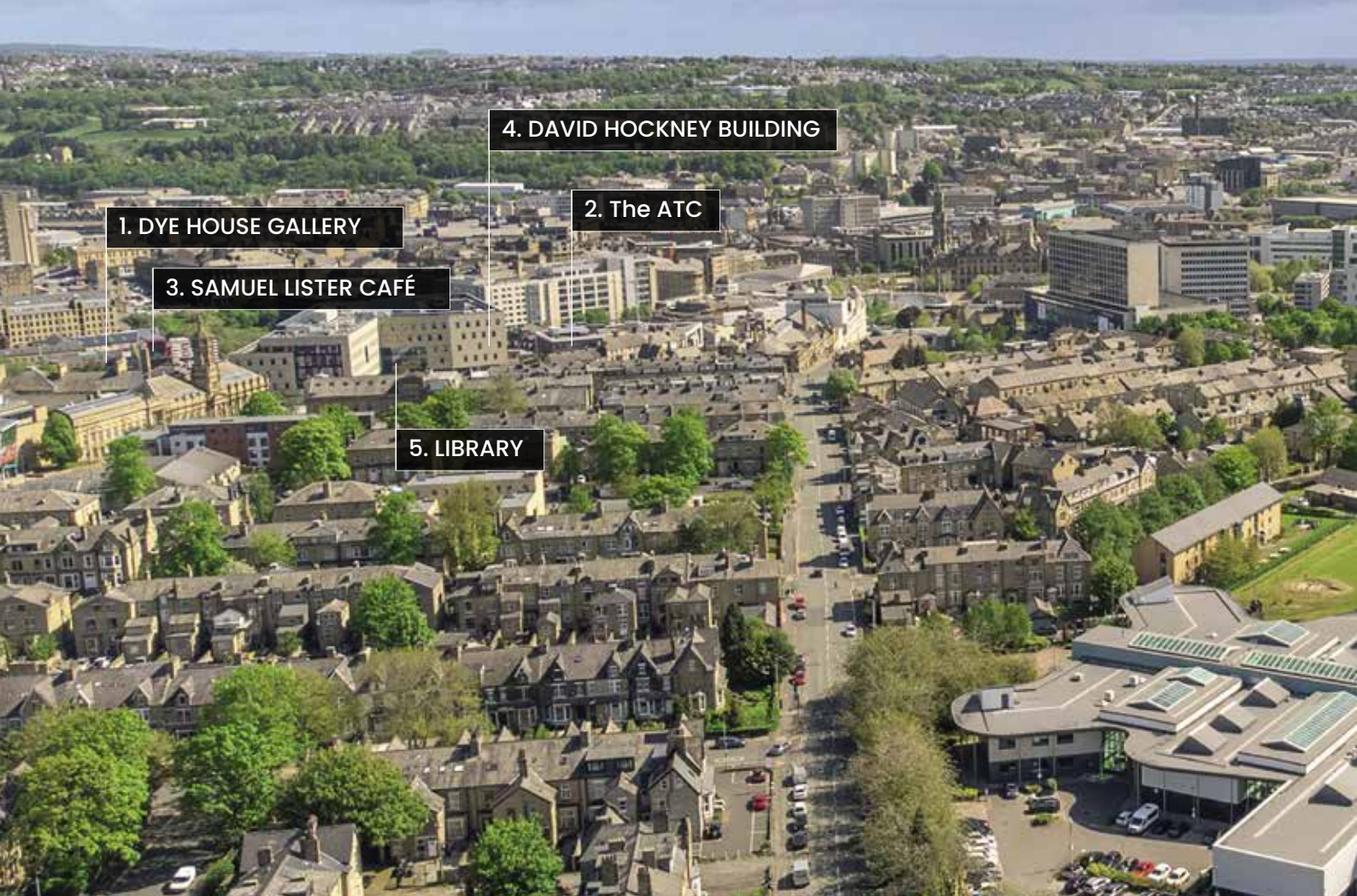
# RESOURCES & FACILITIES

We have some incredible facilities and spaces for your university course studies. From the historic and characterful Lister Building to the state-of-the-art Advanced Technology Centre.

Our Trinity Green Campus is just a short walk from the main campus and houses sports, construction and engineering facilities in a modern environment packed with workshops, technical spaces and tool shops alongside our sports hall and gym.







### 1. Dye House Gallery

This exhibition space hosts events year round, and is used by the Bradford School of Art for exhibitions.



### 2. The Advanced Technology Centre

ATC houses computing, business, and law courses, ophthalmic dispensing labs, and a Moot Court.





#### 4. David Hockney Building

The heart of Bradford College, this £50million city centre building is home to many popular student facilities, cafés and restaurants,



#### 5. Library

Based in the David Hockney Building, our learning resource and IT teams provide a library and mobile library service, including e-learning resources.



#### 3. Samuel Lister Café

For snacks and lunches, the café and on-site Costa outlet will help keep you relaxed and replenished.



#### 6. Trinity Green Campus

A great modern campus which is home to a host of facilities for construction, engineering and sports.



# YOUR CAMPUS, YOUR CITY





We are based in the centre of one of the youngest and most multi-cultural cities in the UK and have provided quality education and training for over 185 years.

We actively promote, and value, the social mobility and cultural diversity of our community, which encourages education, enterprise, and employment, and is the foundation of our college ethos.

The city is buzzing with culture and excitement. Why not spend your spare time in Bradford's social scene, by exploring underground Sunbridge Wells or visiting Broadway Shopping Centre? We have Europe's first IMAX cinema; and the National Science and Media Museum are on our doorstep too! The city is also home to vibrant events like Bradford Festival, Arts festivals, and Illuminate in City Park.

Take some time to explore things a bit further afield and you'll find fabulous art galleries, the UNESCO World Heritage Sites, delightful market towns, and the beautiful Yorkshire Dales. Bradford has also been shortlisted for City of Culture.



# STUDENT LIFE STUDENTS' UNION





The Bradford College Students' Union is a charity led by students, for students, with a vision to play a key role in transforming the lives of students through support, representation and opportunities. Every student is enrolled as a member of Bradford College Students' Union at no charge.

As a charity BCSU are independent from the college, however, they work closely with them to ensure that students have the best experience during their time here. They are also affiliated to the National Union of Students (NUS) who are 7 million students strong!

The Students' Union represents the students at Bradford College giving them access to advice and information, enrichment activities and events, volunteering, and campaigns.

They want to make student life better and aim to do this through capturing the Student Voice. With the help of elected Student Officers and Student Representatives they want to hear the ideas, views and opinions on topics that matter most to learners so that ultimately, they can help improve college life for everyone. You can opt out of Union membership if you wish, but Students' Union activities and services are open to all students regardless of membership. The Students' Union office is located on the ground floor of the David Hockney Building.

[www.bradfordcollegesu.co.uk](http://www.bradfordcollegesu.co.uk)

TOTUM is the UK's leading student discount card and app; recommended by NUS. Download the app to access discounts for free or you can upgrade and buy a card from £14.99 a year, to access the full range of discounts.

For more information: [www.bcsu.me/discounts](http://www.bcsu.me/discounts)

#AMBITION  
BRADFORD





# HOW TO APPLY



## **Entry requirements**

Bradford College offers programmes that are recognised and valued by employers and professional bodies everywhere.

You can gain qualifications on either a full-time or part-time basis over a period of one to six years. Some courses offer exemptions from parts of professional body examinations; others prepare you for direct entry to particular professions or careers.

For some courses, you may require additional qualifications, evidence of relevant work experience, a portfolio of evidence, or Disclosure Barring Service (DBS) clearance.

This will be included in the entry requirements of each individual course.

## **Your Agreement with us**

When you apply as a student at Bradford College, your study and time with us will be governed by a framework of regulations, policies and procedures, which form the basis of your agreement with us.

For details of our policies, procedures, and information regarding tuition fees and any additional charges visit:  
[bradfordcollege.ac.uk/degrees](http://bradfordcollege.ac.uk/degrees)

You should read these carefully before you apply. Please note that this information is subject to change and you are advised to check our website regularly for any changes before you apply.

A person who is not party to this agreement shall not have any rights under or in connection with it. Only you and Bradford College shall have any right to enforce or rely on the agreement.

## Apply direct

You don't need to apply through the Universities and Colleges Admissions Service (UCAS) if Bradford College is your only choice. Simply fill in our application form at [bradfordcollege.ac.uk/apply](http://bradfordcollege.ac.uk/apply).

## Part-time courses

The same should also be done if you want to apply for a part-time programme.

## Full-time courses

Applications for all full-time undergraduate, HND, Foundation degree, and degree courses at Bradford College should be made through the UCAS website.

On the UCAS website, search 'Bradford College'. Individual applications should be made online via [ucas.com](http://ucas.com). For further information please search the UCAS website or visit [facebook.com/ucasonline](https://facebook.com/ucasonline)

## Postgraduate Certificate in Education courses

Applications should be made online through via [find-postgraduate-teachertraining.education.gov.uk](http://find-postgraduate-teachertraining.education.gov.uk), and searching Bradford College. If you require any advice or have any queries about entry requirements or courses.

## Admissions Team:

Tel: 01274 088569

Email: [admissions@bradfordcollege.ac.uk](mailto:admissions@bradfordcollege.ac.uk)

# UCAS TARIFF

## UCAS Points BTEC

BTEC L3 Diploma	UCAS Points
D*D*	112
D*D	104
DD	96
DM	80
MM	64
MP	48
PP	32

## UCAS Points A-Level

A-LEVEL	UCAS Points
A*	56
A	48
B	40
C	32
D	24
E	16

## UCAS Points AS-Level

AS-LEVEL	UCAS Points
A	20
B	16
C	12
D	10
E	6





# SUPPORT SERVICES

Our Student Services team offers a friendly and supportive environment to assist you throughout your time as a student. Student Services is based on the ground floor of the David Hockney Building, a centralised location for delivery of a range of support services and information, advice and guidance.

Along with studying at a welcoming and relaxed campus, you will receive a personal educational experience and lots of opportunities for open discussion, one-to-one learning, and support. We offer a range of pastoral and academic support services to help you achieve your optimum potential when studying at degree level.

## **Counselling**

Bradford College's Counselling Service offers a friendly and supportive opportunity to talk confidentially about any personal or emotional problems causing you concern.

## **Faith and Belief**

We have several rooms set aside for quiet reflection, meditation or prayer. These facilities are called Unity Spaces are available to staff, students, and visitors of any faith or none. The college has a large Muslim population and for this reason at some sites we offer Wudu and Istinja facilities along with the option of gender-segregated prayer space. For more information please visit: [www.bradfordcollege.ac.uk/help/knowledge-base/faith-and-belief](http://www.bradfordcollege.ac.uk/help/knowledge-base/faith-and-belief)

## **Financial Support**

Depending on your personal circumstances you may be able to get financial support with things like travel costs, course costs, childcare, and meals. You will need to make an application for these funds at the time that you enrol and may need to provide evidence of your household income.







## Sport

We offer a wide range of sports and fitness activities, including cricket, football, rugby, badminton and tennis, boxing and martial arts and self-defence. You can play for fun or if you have the commitment and skill, you can represent the College on one of our trophy-winning teams.

## Diversity Plus

We are committed to the promotion of equality and inclusion and to challenging all forms of discrimination. Bradford College offers you a fantastic opportunity to meet people from across the globe and as a student with us you'll have the opportunity to attend events which will help to broaden your horizons and gain understanding of other cultures. Follow us on Twitter @BCdiversityplus.



## **Students with Disabilities and/or Specific Learning Difficulties**

Our specialist SEND and Additional Learning Support Team can help facilitate your additional learning and disability support needs. They provide advice and guidance to support your disability and/or learning difficulty and dedicated areas for you to study in comfort and access a range of assistive hardware and software. You may also be eligible for Disabled Students' Allowances (DSA) to help cover any additional costs of studying that you may face as a direct result of a disability or a specific learning difficulty.

### **The team can provide support for:**

- Autistic spectrum conditions
- Deaf or hard of hearing students
- Medical conditions
- Physical disabilities
- Specific learning difficulties (SpLDs), including Dyslexia
- Visual impairments

## **Academic Support**

Our friendly and experienced Welfare and Support Team can help you keep up with your studies through improving your organisational skills, timekeeping, and workload management.

Our Library Services provide Skills4study, an interactive e-learning resource that will help you gain the skills necessary for degree study. This resource can help you with your writing, critical thinking, reading, note-making and referencing, and with understanding plagiarism, group work, presentations, and exam skills.

## **Alumni Association**

At Bradford College, our network of supporters and former students, staff and Honorary Fellows is growing all the time and is represented by the Bradford College Alumni group.

The group celebrates the successes and achievements of those who have passed through our doors in more than 180 years of providing quality education, documenting the past, showing the diversity of experience and endeavour, and sharing the latest news.

All former students and staff are welcomed, from new graduates to those who attended the College several decades ago.



We would love to stay in touch after you leave Bradford College; visit the webpage below and leave your details to register as an alumni.

[www.bradfordcollege.ac.uk/alumni](http://www.bradfordcollege.ac.uk/alumni)

## Careers Service

Our team of fully qualified professional careers advisers provides the support and guidance you need with every stage of your learning journey. From one-to-one support and group workshops, job search skills like CV writing, job applications and covering letters. They also arrange a variety of exciting events and activities across the academic year, including careers fairs, recruitment events and visiting speakers.

## Student Health Service

Bradford Student Health Service is a dedicated NHS GP service specialising in student health. It provides confidential and comprehensive health care with access to specialist facilities.

Students who live in the practice area can register with one of the doctors and make full use of the service. Consultations and treatments are strictly confidential.

## Mental Health

Fika is designed to help people develop the seven skills of mental fitness, with courses proven to reduce stress, improve mental health, boost performance and regulate users' behaviour and emotions – in just five minutes per day! Accessed through a mobile app, Fika is designed to develop students' essential skills, supporting their ability to bounce back from the pandemic and to thrive and succeed in their pursuit of education and employment. Most importantly, this platform will support students to be proud of who they are and emerge from education as well-rounded human beings, ready to face the world.

## Accommodation

If you're leaving home for the first time, or are new to Bradford, you'll probably want to live in student accommodation. Our accommodation service is administered by Unipol, a not-for-profit housing charity, who are knowledgeable about the different types of accommodation available in Bradford; so whether you choose Halls or Homestay the same high standard of facilities and support are available to you.

A range of comfortable and affordable accommodation is available that will provide you with a secure and supportive environment. The accommodation options are in great locations within easy walking distance of the college or have good transport links and all the accommodation recommended by the team is checked by Unipol, meeting all government standards. [www.bradfordcollege.ac.uk/help/knowledge-base/accommodation](http://www.bradfordcollege.ac.uk/help/knowledge-base/accommodation)





# FEES & FUNDING

At Bradford College, we are committed to delivering quality degrees at affordable prices. We work hard to cut the costs and not the corners on our undergraduate, postgraduate, and professional courses. As the Government provides tuition fee loans, you will not be asked to pay fees up front. Also, you won't pay back your loan until you've left our College, got a job, and are earning.

## How to apply for the loan

Apply for your loan via Student Finance England. Please ensure you have made your application and secured funding for your course prior to registration. The Student Finance England application is available at: [gov.uk/apply-for-student-finance](http://gov.uk/apply-for-student-finance)

## Postgraduate Loans

Student Finance England is now offering postgraduate funding support of up to £11,222 for Masters courses. Find out more at [gov.uk/funding-for-postgraduate-study](http://gov.uk/funding-for-postgraduate-study)

## Money to help you study

If you're coming to study with us, you may have additional costs to pay for, but don't worry, you can apply for help. Below shows the different types of financial support available to new and continuing students. For further information on each type of financial support visit: [bradfordcollege.ac.uk/study-money](http://bradfordcollege.ac.uk/study-money)

- Full-time Undergraduate and PGCE students
- Part-time Undergraduate students
- Full and part-time Postgraduate students
- Funding for students with Disabilities/Learning Difficulties
- Other sources of funding

For the latest fee see [www.bradfordcollege.ac.uk](http://www.bradfordcollege.ac.uk)

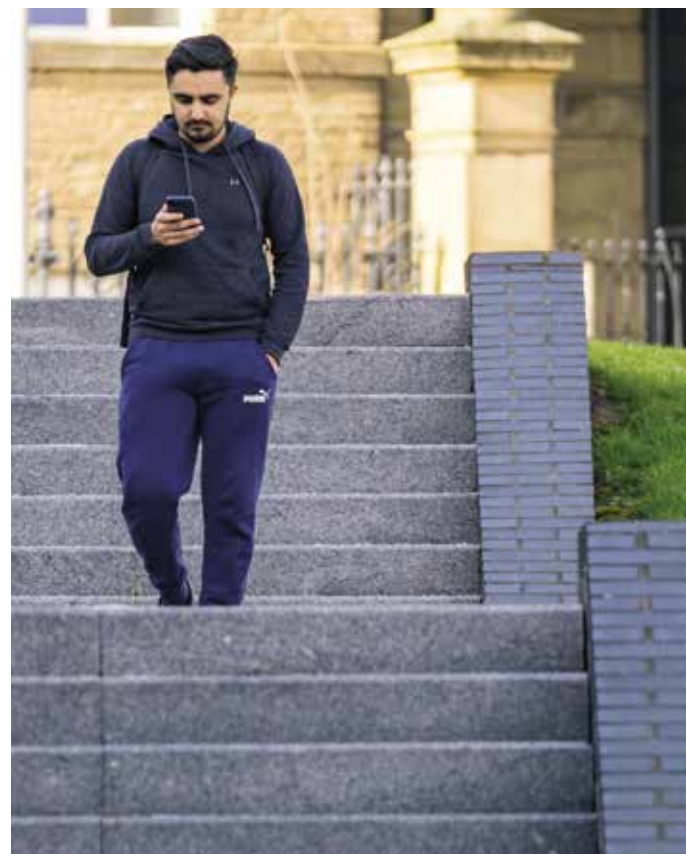


## Disabled Students' Allowance

You may claim Disabled Students' Allowance (DSA) in addition to your student finance loans and grants to cover any extra study-related costs you incur due to an impairment, mental health condition, or learning difficulty. It's neither a benefit nor a loan, so it doesn't need repaying.

The amount you'll receive depends on your individual needs, not on your income. The DSA is available to both full-time and part-time students studying on a Higher Education course. For full details visit: [gov.uk/disabled-students-allowances-dsas](http://gov.uk/disabled-students-allowances-dsas)

If you need help in applying for DSA, contact the College's Disability Services team on [als@bradfordcollege.ac.uk](mailto:als@bradfordcollege.ac.uk)



## Advanced Learner Loan

For Level 3 Further Education (eg Access to HE) courses only.

The Advanced Learner Loan is a government-funded loan that is easy to apply for, doesn't take your household income into account, and doesn't involve a credit check.

### You will need to pay your loan back when:

- You have finished your course
- You earn more than £25,000.

### To qualify for the Advanced Learner Loan you must be:

- Studying at an approved college or training provider. Bradford College is an approved centre
- 19 years of age or older on the first day of your course
- Studying a full- or part-time Further Education qualification at Level 3 or above
- A UK Resident or a UK national, or have 'settled status' (this means there are no restrictions on how long you can stay)
- A resident in the UK for three years or more.

For more information visit: [gov.uk/advanced-learner-loan](http://gov.uk/advanced-learner-loan)

## Useful contacts

Bradford College Higher Education  
Student Finance Team

Tel: 01274 088502/8642

Email: [hestudentfinance@bradfordcollege.ac.uk](mailto:hestudentfinance@bradfordcollege.ac.uk)

In person: HE Student Finance Team, C22,  
Lister Building, Great Horton Road,  
Bradford, BD7 1AY  
Student Finance England  
[gov.uk/student-finance](http://gov.uk/student-finance)

# #AMBITION BRADFORD

**Course, application or  
enrolment information**

01274 088088

[hello@bradfordcollege.ac.uk](mailto:hello@bradfordcollege.ac.uk)

**Bradford College**

Great Horton Road

Bradford

West Yorkshire

BD7 1AY

**Bradford** College

