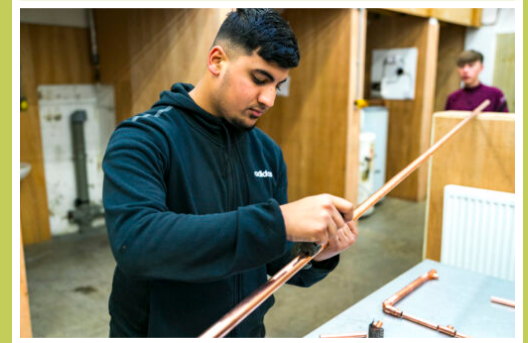




Level 3 Electrical Installation



Subject Area	Construction
Course Type	School Leavers
Study Level	Level 3
Delivery Mode	Full-time
Duration	1 Academic Year
Start Date	September 2026
Course Code	PA000532

View on bradfordcollege.ac.uk



Course Summary

Our Level 3 Electrical Installation course provides you with a comprehensive and industry-focused pathway to continue your studies into the electrical sector, building on your existing skills and preparing you for advanced technical work. This programme is designed for learners who are ready to progress beyond the fundamentals and develop the deeper knowledge, practical ability and professional understanding required to work confidently in a wide range of electrical environments.

Throughout the course, you'll explore the scientific and technical principles that underpin modern electrical systems, while gaining hands-on experience with the tools, equipment and methods used across the industry. You'll develop the ability to interpret technical information, follow industry standards, and apply safe working practices in real-world scenarios.

This qualification is structured to help you grow both academically and practically, supporting your progression into employment, an apprenticeship, or further specialist training. By combining classroom learning with practical workshop activities, the course ensures you are fully prepared for the responsibilities and expectations of a skilled

What You Will Learn

You'll deepen your technical expertise and build the advanced skills needed to work confidently and safely in the electrical industry. The course takes you beyond the basics and into the real-world principles that drive modern electrical systems.

You'll explore how electrical properties influence circuits, systems and equipment, and get to grips with the operating principles of D.C. machines, A.C. motors and key electrical components. You'll learn how lighting systems are designed and applied, and develop a strong understanding of supply characteristics and consumer equipment.

You'll also build the knowledge needed to design electrical installations, carry out safe testing and commissioning, and complete all required certification and documentation. This includes testing before circuits are energised, testing live systems, and ensuring installations meet industry standards.

As the course progresses, you'll learn how to identify electrical faults, understand why they occur, and apply the correct procedures and techniques to diagnose and fix them. You'll also gain hands-on experience commissioning electrical systems and equipment in line with current requirements.

By the end of the programme, you'll have the advanced knowledge, practical skills and professional confidence to take your next step in the electrical installation industry.

Modules

- Principles of Electrical Science
- Electrical Design and Installation Practices and Procedures
Principles of Inspection
- Testing and Commissioning Electrical Systems
Inspecting
- Testing and Commissioning Electrical Systems
- Electrical System Fault Diagnosis and Rectification
Requirements for Electrical Installations (BS7671)

Entry Requirements

Applicants and progressing learners must have GCSE Maths and GCSE English at a grade

4 as a minimum and successfully completed a Level 2 Electrical Installation qualification.

Work Experience

You will undertake a minimum of 10 hours of work preparation activities and 30 hours of work experience, with a strong focus on developing professional level skills. This includes enhancing your industry awareness, building key construction sector competencies, understanding workplace expectations and responsibilities, and participating in sector specific projects.

You will also have the opportunity to join the Ambition [HUB], where you can partake in employer led and career focused masterclasses throughout the year. As part of this, you will work on a year long employer designed project and may undertake up to 160 hours of additional work experience. This extended experience supports your understanding of workplace culture and helps you develop adaptability, communication and resilience.

Progression

Successful completion of this course can lead to opportunities for employment or an apprenticeship.

Careers include:

Installation Electrician (Domestic, Commercial, Industrial)

Maintenance Electrician

Electrical Fitter

Renewable Energy Installer

Disclaimer: Our prospectus, college documents and website are simply here to offer a guide. We accept no liability for any inaccurate statements and are not responsible for any negative outcomes if you rely on an inaccurate statement.

We reserve the right to withdraw any programmes or service at any time.