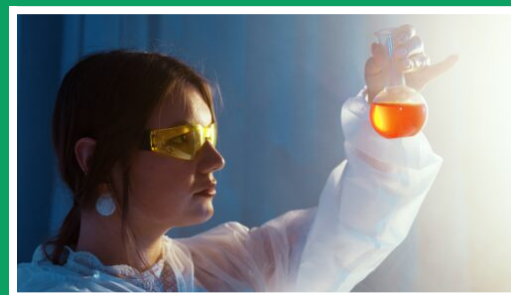




Access to University – Science (18 Year old)



Subject Area	Science
Course Type	Access to Higher Education
Study Level	Level 3
Delivery Mode	Full-time
Duration	1 Year
Start Date	September 2026
Course Code	PA000349

View on bradfordcollege.ac.uk



Course Summary

This course provides a strong foundation in both biology and chemistry for students aspiring to progress to higher education in scientific disciplines. Through a combination of theoretical knowledge and practical skills, you will gain a deeper understanding of biological and chemical concepts, as well as develop essential study and ICT skills to support your academic journey.

You will cover essential topics such as cell biology, biomolecules, human physiology, pharmacology, and both inorganic and organic chemistry, while also developing practical laboratory skills, academic study techniques, and ICT proficiency for further study in science.

You may choose to progress to degrees in Biomedical Sciences, Chemical Engineering, Chemistry, Genetics, Human Nutrition, Nutrition and Food Science, Paramedical Sciences, Pharmacology, Physiotherapy, Podiatry and Radiography.

The course includes an opportunity to complete 10 hours of work preparation such as preparing a CV, mock interviews, research skills and learning about workplace behaviours. You will also have a chance to gain 30 hours of work experience in a external

setting, to help prepare you for your chosen career.

Please note that you must be 18 years old to study on this course.

What You Will Learn

You should also expect to work with others and independently, meet deadlines and complete work to a high standard.

In addition to the skills gained in Biology/Chemistry, you will also develop skills in independent research, critical thinking and evaluative skills, study skills, interview skills and interpersonal skills. You will develop the necessary skills to progress into further education, which can include university.

Modules

- Introduction to Cell Biology
- Biomolecules and Key Biochemical Principles
- Cardiovascular, Respiratory and Gastro-intestinal Systems
- Homeostasis, Co-ordination and Control and the Excretory System
- Practical Investigation (Biology)
- Pharmacology
- Introduction to Chemistry
- Practical Inorganic Chemistry
- Core Principles of Chemistry
- Further Inorganic Chemistry
- Further Physical Chemistry
- Core Organic Chemistry
- Preparing to Progress
- Developing Skills for Studying
- ICT – Presentation Software

Entry Requirements

You must be 18 years old to study on this course.

Entry to this course requires GCSE English Language, Maths and Double Science at a grade 4 or C. Some Universities may not require a Science GCSE but require 12 credits at a distinction on this Access course. It is your responsibility to check that your Mathematics and English Language qualifications are accepted for the Higher Education

Institution course you wish to eventually apply for. When applying to join an Access to HE course, please state on the application form which Science pathway you require.

Induction for this course will begin at the start of September.

Work Experience

You will gain 30 hours work experience on this course.

Progression

The Access to Higher Education – Science course acts as your direct progression route from Level 3 study to degree level study at University in Science-related subjects. You may choose to progress to degrees in:

- Biomedical Sciences
- Chemical Engineering
- Chemistry
- Genetics
- Human Nutrition
- Nutrition and Food Science
- Paramedical Sciences
- Pharmacology
- Physiotherapy
- Podiatry
- Radiography
- Science
- Sports Science and a wide range of combined and related degrees.

This will also enable you to progress to university for further study or into a career within the healthcare sector. A high percentage of Access to HE students have been successful in progressing to the university of their choice.

Disclaimer: Our prospectus, college documents and website are simply here to offer a guide. We accept no liability for any inaccurate statements and are not responsible for any negative outcomes if you rely on an inaccurate statement. We reserve the right to withdraw any programmes or service at any time.