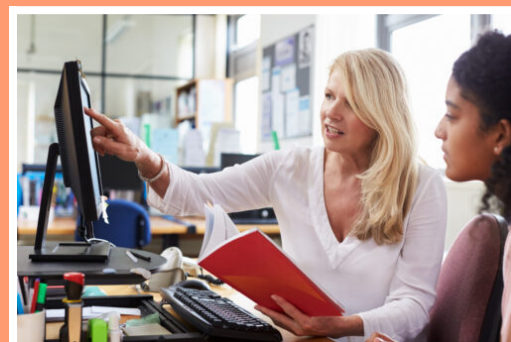


## Certificate in Education (Further Education)



Subject Area	Education & Teaching
Course Type	Higher Education
Study Level	Level 5
Delivery Mode	Part-time
Location	Lister Building
Duration	2 Academic Years
Start Date	September 2025
Course Code	PPCL007

View on [bradfordcollege.ac.uk](https://bradfordcollege.ac.uk)



### Course Summary

**The Certificate in Education (Further Education) is a recognised, advanced teaching qualification.**

This course trains you to teach your specialist subject (vocational or academic) in colleges. Learn practical skills, develop inclusive teaching methods, and stay up to date with the latest educational thinking. Available full-time or part-time.

The principal aims of the programme are to:

- Gain the skills and knowledge to become a competent, confident and ambitious teacher
- Promote fairness and opportunity in education
- Stay up to date on the latest teaching methods. You will keep up with new research, what teacher organisations are recommending, and any recent government changes in education.
- Develop a commitment to lifelong learning and Continual Professional

Development;

- Develop graduates who have an analytical and reflective approach to professional practice in which theory, academic understanding and pedagogy are inter-related and integrated through Level 5 study.

The Certificate in Education (Further Education) delivers an **ambitious**, contemporary curriculum for trainee teachers in and around the Bradford area. A **key strength** is our position in the heart of a thriving Further Education College and our **strong relationships** with College teams and mentors.

## Course Benefits

- Contemporary course content
- Specialist pathways – meeting the needs of the local community
- Opportunities to study in or pre-service, and with flexibility at either full or part-time
- Aligned with occupational standards

## What You Will Learn

---

These professional courses are for those who wish to teach 14+ in Further Education and training settings.

You will undertake academic modules in order to gain the knowledge and skills required for a career in teaching in an FE college or training provider.

You will be able to work alongside a mentor and other colleagues so that you can develop your teaching practice as a reflective practitioner.

Pathways exist if you are already working as a teacher but don't have a full teaching qualification (in-service), or if you are working towards securing employment in education (pre service).

You will be supported by qualified mentors in the workplace with an appropriate curriculum, and a large emphasis is put on work experience.

## Modules

---

- Professional practice 1 & 2
- Exploring learning theories
- Developing the curriculum

- Subject specialist pedagogy
- Teacher as a researcher

Additional modules are offered, depending on your route of specialism.

## Entry Requirements

---

Applicants should normally have achieved the following prior to registration for the programme:

### Admissions criteria

- Level 3+ subject specific qualification.
- An eligible GCSE/Level 2 Maths and English qualification or equivalency\*.
- Relevant experience/prior learning.
- Enhanced DBS and health check, successful interview.

\*full list of eligible Maths/English quals: [Eligible maths and English qualifications | Society for Education and Training](#)

## Progression

---

The Certificate in Education is recognised as a full teaching qualification for the FE sector and eligible for progression to QTLS – Qualified Teaching Learning and Skills. The QTLS is an optional post qualification professional recognition scheme run by the Society of Education and Training.

**Disclaimer:** Our prospectus, college documents and website are simply here to offer a guide. We accept no liability for any inaccurate statements and are not responsible for any negative outcomes if you rely on an inaccurate statement. We reserve the right to withdraw any programmes or service at any time.